

## \$177,500 - 310 10404 24 Avenue, Edmonton

MLS® #E4461876

**\$177,500**

2 Bedroom, 0.50 Bathroom, 1,146 sqft

Condo / Townhouse on 0.00 Acres

Ermineskin, Edmonton, AB

Welcome to this charming 2-storey townhouse in the heart of Ermineskin. The perfect blend of comfort, convenience, and value! Whether you're a first-time buyer, downsizer, or investor, this home checks all the boxes with over 1,100 sq. ft. of functional living space and a layout designed for easy everyday living. The main floor features bright, open living and oversized dining space easily fits a large table (or a home office setup!), while the kitchen offers ample counter space for all your cooking needs. Upstairs, you'll find two generous bedrooms, including a primary suite with a walk-through closet and direct access to the full bath. Enjoy the convenience of in-suite laundry, tons of storage, your assigned parking stall right outside the door and your large deck, perfect for morning coffee or evening relaxation. Located in a well-managed, complex with low condo fees and plenty of visitor parking, and offers unbeatable access to Century Park LRT, South Common, Anthony Henday, and Gateway Blvd.

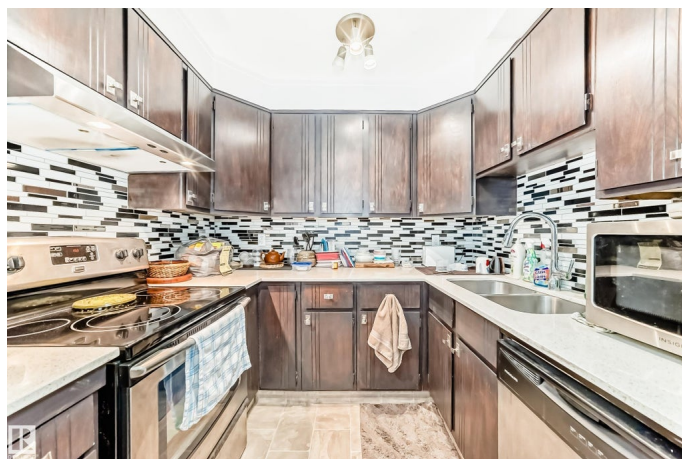
Built in 1978

### Essential Information

MLS® # E4461876

Price \$177,500

Bedrooms 2



Bathrooms	0.50
Half Baths	1
Square Footage	1,146
Acres	0.00
Year Built	1978
Type	Condo / Townhouse
Sub-Type	Stacked Townhouse
Style	2 Storey
Status	Active

### Community Information

Address	310 10404 24 Avenue
Area	Edmonton
Subdivision	Ermineskin
City	Edmonton
County	ALBERTA
Province	AB
Postal Code	T6J 4J7

### Amenities

Amenities	Parking-Visitor, Patio, Storage-In-Suite
Parking	Stall

### Interior

Interior Features	ensuite bathroom
Appliances	Dishwasher-Built-In, Dryer, Hood Fan, Refrigerator, Stove-Electric, Washer
Heating	Forced Air-1, Natural Gas
Stories	2
Has Basement	Yes
Basement	None, No Basement

### Exterior

Exterior	Wood, Stucco, Vinyl
Exterior Features	Landscaped, Playground Nearby, Public Transportation, Schools, Shopping Nearby, See Remarks
Roof	Asphalt Shingles
Construction	Wood, Stucco, Vinyl
Foundation	Concrete Perimeter

**Additional Information**

Date Listed	October 12th, 2025
Days on Market	2
Zoning	Zone 16
Condo Fee	\$246

DATA IS DEEMED RELIABLE BUT IS NOT GUARANTEED ACCURATE BY THE REALTORS® ASSOCIATION OF EDMONTON. COPYRIGHT 2025 BY THE REALTORS® ASSOCIATION OF EDMONTON. ALL RIGHTS RESERVED.Trademarks are owned or controlled by the Canadian Real Estate Association (CREA) and identify real estate professionals who are members of CREA (REALTOR®, REALTORS®) and/or the quality of services they provide (MLS®, Multiple Listing Service®)

Listing information last updated on October 14th, 2025 at 5:47am MDT