

Courtesy Of Debbie Hawco Of MaxWell Polaris

\$155,500 - 13 Maple Terrace, Edmonton

MLS® #E4461617

\$155,500

3 Bedroom, 2.00 Bathroom, 1,152 sqft
Land Lease Community on 0.00 Acres

Maple Ridge (Edmonton), Edmonton, AB

This lovely 3 bed, 2 bath home has been **UPGRADED** to suit all your needs. You will find a bright, **OPEN CONCEPT** family and kitchen area. All **NEW** doors and **VINYL** flooring throughout. The master bedroom features its own 3-piece **ENSUITE** at one end, and two more **SPACIOUS** bedrooms on the opposite end of the home. Brand new **STACKED** washer and dryer in 2025. All new Energy save kitchen appliances accented with stylish **QUARTZ** countertops. Furnace and hot water tank are both 2017. The roof was redone in 2024; all walls have been reinsulated and drywalled for extra warmth. This home has all **NEW** vinyl windows all around and **FRESH** paint inside and out. The back stairs were built in 2025. Spacious storage **SHED** has its own power. Partly fenced yard. This home backs on to a small greenspace for more privacy. Close to **PARKS**, bus stops and shopping.



Built in 1980

Essential Information

MLS® #	E4461617
Price	\$155,500
Bedrooms	3
Bathrooms	2.00
Full Baths	2

Square Footage 1,152
Acres 0.00
Year Built 1980
Type Land Lease Community
Sub-Type Detached Single Family
Style Bungalow
Status Active

Community Information

Address 13 Maple Terrace
Area Edmonton
Subdivision Maple Ridge (Edmonton)
City Edmonton
County ALBERTA
Province AB
Postal Code T6P 1H8

Amenities

Parking 2 Outdoor Stalls

Interior

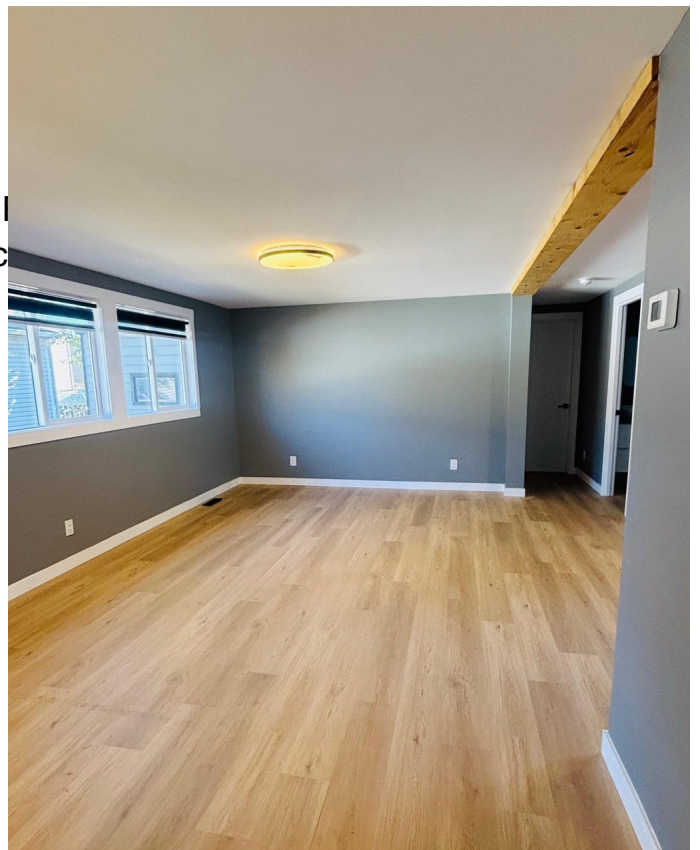
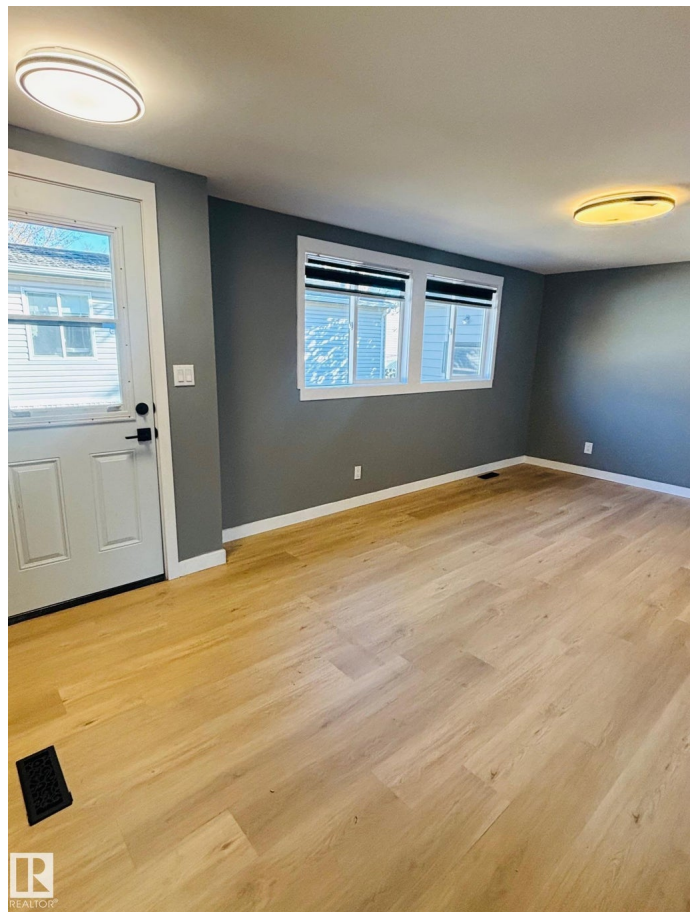
Interior Features ensuite bathroom
Appliances Dishwasher-Built-In, Hood I
Storage Shed, Stove-Electric
Heating Forced Air-1, Natural Gas

Exterior

Exterior Prefab
Construction Prefab
Foundation Concrete Perimeter, Piling

Additional Information

Date Listed October 9th, 2025
Days on Market 9
Zoning Zone 42



DATA IS DEEMED RELIABLE BUT IS NOT GUARANTEED ACCURATE BY THE REALTORS® ASSOCIATION OF EDMONTON. COPYRIGHT 2025 BY THE REALTORS® ASSOCIATION OF EDMONTON. ALL RIGHTS RESERVED. Trademarks are owned or controlled by the Canadian Real Estate Association (CREA) and identify real estate professionals who are members of CREA (REALTOR®, REALTORS®) and/or the quality of services they provide (MLS®, Multiple Listing Service®)

Listing information last updated on October 17th, 2025 at 11:47pm MDT