

## \$239,999 - 1280 Lakewood Road, Edmonton

MLS® #E4459700

**\$239,999**

3 Bedroom, 2.00 Bathroom, 1,082 sqft  
Condo / Townhouse on 0.00 Acres

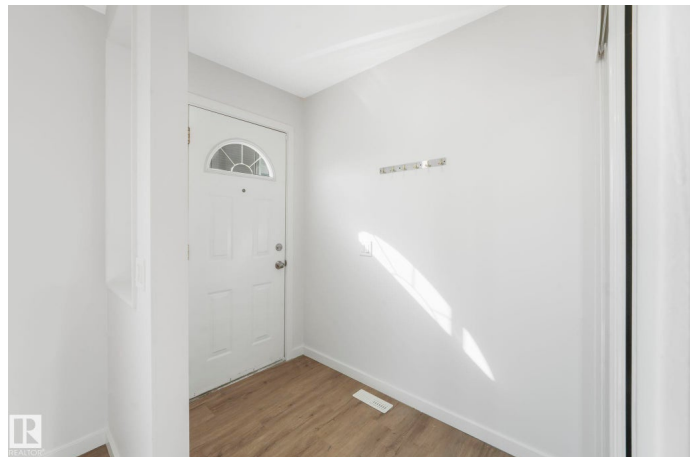
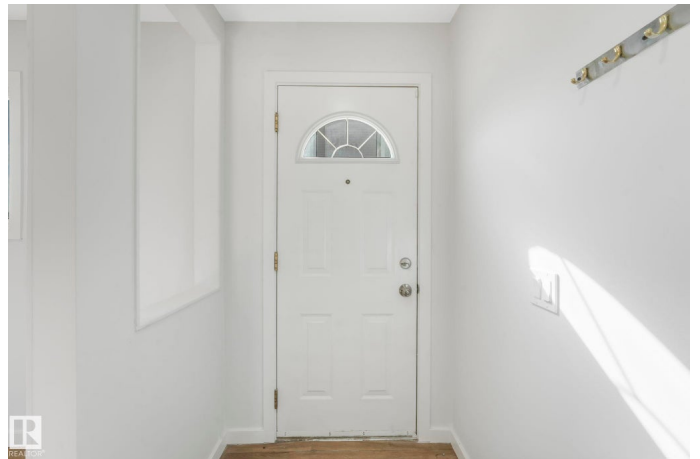
Tipaskan, Edmonton, AB

Welcome to this beautifully renovated end unit townhouse offering over 1100 sq ft of comfortable living space. Perfect for first time buyers families, or investors. This home combines style, function, and a location that is hard to beat. Just steps from Tipaskan Elementary School, you can watch your kids walk to school right from your window. The bright and spacious brand new kitchen features new countertops, backsplash, and brand new stainless steel appliances. Fresh paint and luxury vinyl plank flooring on main floor. Upstairs you will find three generous bedrooms and a full bathroom brand new carpet his /her closet in primary bedroom, plus a partly finished basement offers a large family room and a full bath for convenience . Enjoy your private evening in fenced backyard and shed for storage. With parking at your door step and visitor parking nearby, this home is move in ready near all ammenties like school,shopping centre play grounds and freeways!!

Built in 1978

### Essential Information

MLS® #	E4459700
Price	\$239,999
Bedrooms	3



Bathrooms	2.00
Full Baths	2
Square Footage	1,082
Acres	0.00
Year Built	1978
Type	Condo / Townhouse
Sub-Type	Townhouse
Style	2 Storey
Status	Active

### **Community Information**

Address	1280 Lakewood Road
Area	Edmonton
Subdivision	Tipaskan
City	Edmonton
County	ALBERTA
Province	AB
Postal Code	T6K 3P2

### **Amenities**

Amenities	No Animal Home, No Smoking Home, Parking-Visitor
Parking Spaces	1
Parking	Stall

### **Interior**

Appliances	Dishwasher-Built-In, Dryer, Microwave Hood Fan, Refrigerator, Stove-Electric, Washer, See Remarks
Heating	Forced Air-1, Natural Gas
Stories	2
Has Basement	Yes
Basement	Full, Partially Finished

### **Exterior**

Exterior	Wood, Stucco
Exterior Features	Fenced, Flat Site, Landscaped, Level Land, Playground Nearby, Schools, See Remarks
Roof	Asphalt Shingles
Construction	Wood, Stucco
Foundation	Concrete Perimeter

## Additional Information

Date Listed	September 25th, 2025
Days on Market	21
Zoning	Zone 29
Condo Fee	\$347

DATA IS DEEMED RELIABLE BUT IS NOT GUARANTEED ACCURATE BY THE REALTORS® ASSOCIATION OF EDMONTON. COPYRIGHT 2025 BY THE REALTORS® ASSOCIATION OF EDMONTON. ALL RIGHTS RESERVED. Trademarks are owned or controlled by the Canadian Real Estate Association (CREA) and identify real estate professionals who are members of CREA (REALTOR®, REALTORS®) and/or the quality of services they provide (MLS®, Multiple Listing Service®)

Listing information last updated on October 16th, 2025 at 6:17pm MDT