

# \$235,000 - 9345 103a Avenue, Edmonton

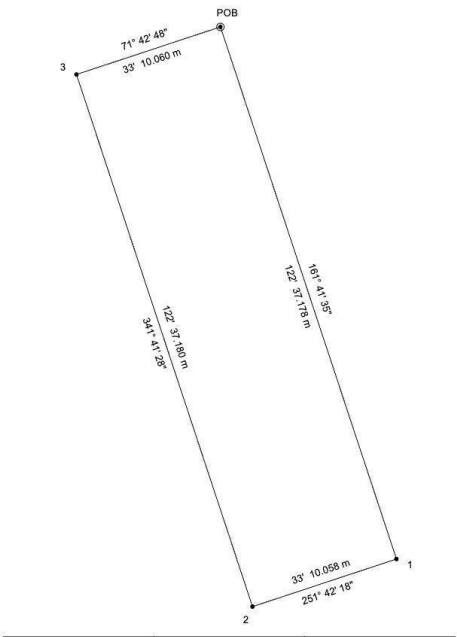
MLS® #E4456362

**\$235,000**

0 Bedroom, 0.00 Bathroom,  
Single Family on 0.00 Acres

Boyle Street, Edmonton, AB

Prime infill opportunity in the heart of Boyle Street! This 33' x 122' RM-zoned lot offers endless potential—build a single-family home, duplex, or up to 4 units with basement suites (subject to City approval). The location is unbeatable: steps from the River Valley, Downtown, Rogers Place, Stadium LRT, Commonwealth Rec Centre, Chinatown, and Little Italy. Quick access to Jasper Ave, Yellowhead, and major routes makes this property a commuter's dream. Surrounded by ongoing revitalization and new infills, this is your chance to secure land in an area positioned for major growth. Flat, serviced, and ready for redevelopment with rear lane access ideal for garage or garden suite potential. Perfect for builders, investors, or buyers who want to design their dream home in a vibrant, connected community. Don't miss this chance to capitalize on Edmonton's core renewal!



## Essential Information

MLS® #	E4456362
Price	\$235,000
Bathrooms	0.00
Acres	0.00
Type	Single Family
Sub-Type	Vacant Lot/Land

Status                      Active

**Community Information**

Address                    9345 103a Avenue  
Area                        Edmonton  
Subdivision               Boyle Street  
City                        Edmonton  
County                    ALBERTA  
Province                  AB  
Postal Code               T5H 0H3

**Exterior**

Exterior Features    Flat Site, Golf Nearby, Schools, Shopping Nearby

**Additional Information**

Date Listed               September 5th, 2025  
Days on Market        2  
Zoning                    Zone 13

DATA IS DEEMED RELIABLE BUT IS NOT GUARANTEED ACCURATE BY THE REALTORS® ASSOCIATION OF EDMONTON. COPYRIGHT 2025 BY THE REALTORS® ASSOCIATION OF EDMONTON. ALL RIGHTS RESERVED.Trademarks are owned or controlled by the Canadian Real Estate Association (CREA) and identify real estate professionals who are members of CREA (REALTOR®, REALTORS®) and/or the quality of services they provide (MLS®, Multiple Listing Service®)  
Listing information last updated on September 7th, 2025 at 1:17am MDT