

\$439,000 - 4611 16a Avenue, Edmonton

MLS® #E4455447

\$439,000

4 Bedroom, 2.50 Bathroom, 1,193 sqft
Single Family on 0.00 Acres

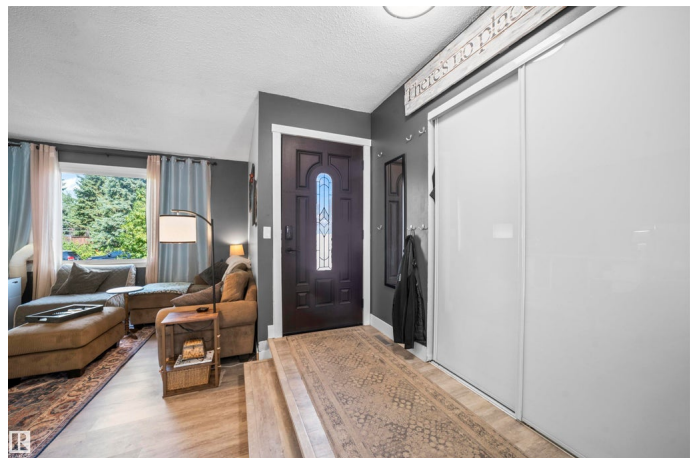
Pollard Meadows, Edmonton, AB

Fresh, stylish, and move-in ready! This beautifully updated 1192 SQ FT bungalow in POLLARD MEADOWS offers 3BEDROOMS, 2.5 BATHS, and a SEPARATE SIDE ENTRANCE. The home features a modern UPGRADED KITCHEN with NEWER APPLIANCES, replaced WINDOWS, and updated ROOFING. BASEMENT adds even more living space with a 4th BEDROOM, 3-PIECE BATH and a huge FAMILY ROOM—perfect for a pool table or big screen setup. Outside, enjoy a SPACIOUS BACKYARD with a GAZEBO included. Ideally located near schools, shopping, transit, Anthony Henday, and within walking distance to the GURDWARA. A perfect choice for families looking for comfort, convenience, and value!

Built in 1979

Essential Information

| | |
|----------------|-----------|
| MLS® # | E4455447 |
| Price | \$439,000 |
| Bedrooms | 4 |
| Bathrooms | 2.50 |
| Full Baths | 2 |
| Half Baths | 1 |
| Square Footage | 1,193 |
| Acres | 0.00 |



| | |
|------------|------------------------|
| Year Built | 1979 |
| Type | Single Family |
| Sub-Type | Detached Single Family |
| Style | Bungalow |
| Status | Active |

Community Information

| | |
|-------------|-----------------|
| Address | 4611 16a Avenue |
| Area | Edmonton |
| Subdivision | Pollard Meadows |
| City | Edmonton |
| County | ALBERTA |
| Province | AB |
| Postal Code | T6L 2S3 |

Amenities

| | |
|-----------|------------------------|
| Amenities | Detectors Smoke |
| Parking | Double Garage Detached |

Interior

| | |
|-------------------|---|
| Interior Features | ensuite bathroom |
| Appliances | Dishwasher-Built-In, Dryer, Garage Control, Garage Opener, Refrigerator, Stove-Electric, Washer |
| Heating | Forced Air-1, Natural Gas |
| Stories | 2 |
| Has Basement | Yes |
| Basement | Full, Finished |

Exterior

| | |
|-------------------|--|
| Exterior | Wood, Vinyl |
| Exterior Features | Fenced, Park/Reserve, Playground Nearby, Public Transportation, Schools, Shopping Nearby |
| Roof | Asphalt Shingles |
| Construction | Wood, Vinyl |
| Foundation | Concrete Perimeter |

Additional Information

| | |
|----------------|-------------------|
| Date Listed | August 30th, 2025 |
| Days on Market | 2 |

Zoning

Zone 29

DATA IS DEEMED RELIABLE BUT IS NOT GUARANTEED ACCURATE BY THE REALTORS® ASSOCIATION OF EDMONTON. COPYRIGHT 2025 BY THE REALTORS® ASSOCIATION OF EDMONTON. ALL RIGHTS RESERVED. Trademarks are owned or controlled by the Canadian Real Estate Association (CREA) and identify real estate professionals who are members of CREA (REALTOR®, REALTORS®) and/or the quality of services they provide (MLS®, Multiple Listing Service®)

Listing information last updated on September 1st, 2025 at 3:02am MDT