

\$400,000 - 1023 35 Street, Edmonton

MLS® #E4454660

\$400,000

3 Bedroom, 1.50 Bathroom, 1,023 sqft
Single Family on 0.00 Acres

Crawford Plains, Edmonton, AB

Great location on a quiet street. Huge Yard with so much potential. Large Garage 24 x 28 with a long front drive. Inside the main living room has vaulted ceilings. The eat in kitchen has a garden door out to the dec. Upstairs there are 2 bedrooms 4 piece main bathroom. The 3rd level has a family room, 3rd bedroom, and a 2 piece bathroom. The 4th level has a laundry room and tons of storage space

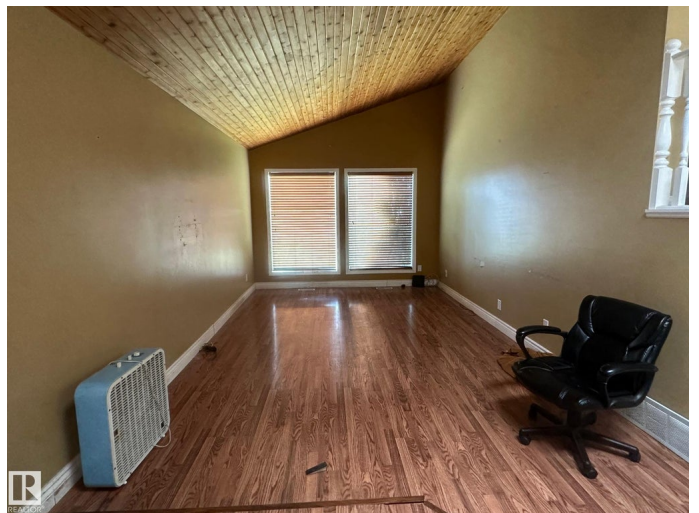
Built in 1984

Essential Information

MLS® #	E4454660
Price	\$400,000
Bedrooms	3
Bathrooms	1.50
Full Baths	1
Half Baths	1
Square Footage	1,023
Acres	0.00
Year Built	1984
Type	Single Family
Sub-Type	Detached Single Family
Style	4 Level Split
Status	Active

Community Information

Address 1023 35 Street



Area	Edmonton
Subdivision	Crawford Plains
City	Edmonton
County	ALBERTA
Province	AB
Postal Code	T6L 2L3

Amenities

Amenities	See Remarks
Parking	Double Garage Detached

Interior

Appliances	None
Heating	Forced Air-1, Natural Gas
Stories	3
Has Basement	Yes
Basement	Full, Finished

Exterior

Exterior	Wood
Exterior Features	See Remarks
Roof	Asphalt Shingles
Construction	Wood
Foundation	Concrete Perimeter

Additional Information

Date Listed	August 25th, 2025
Days on Market	61
Zoning	Zone 29
RE / Bank Owned	Yes

DATA IS DEEMED RELIABLE BUT IS NOT GUARANTEED ACCURATE BY THE REALTORS® ASSOCIATION OF EDMONTON. COPYRIGHT 2025 BY THE REALTORS® ASSOCIATION OF EDMONTON. ALL RIGHTS RESERVED. Trademarks are owned or controlled by the Canadian Real Estate Association (CREA) and identify real estate professionals who are members of CREA (REALTOR®, REALTORS®) and/or the quality of services they provide (MLS®, Multiple Listing Service®)

Listing information last updated on October 24th, 2025 at 10:47pm MDT