

\$439,900 - 12107 123 Street, Edmonton

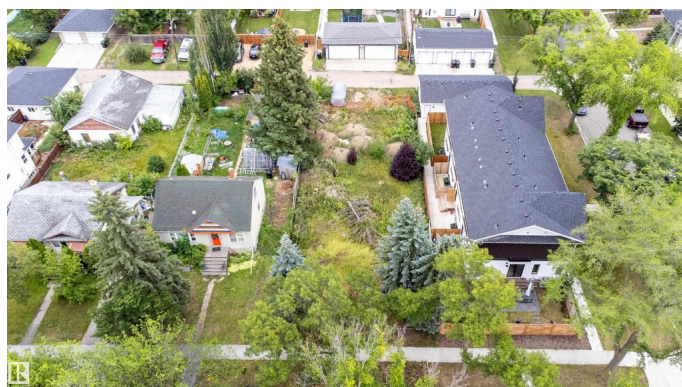
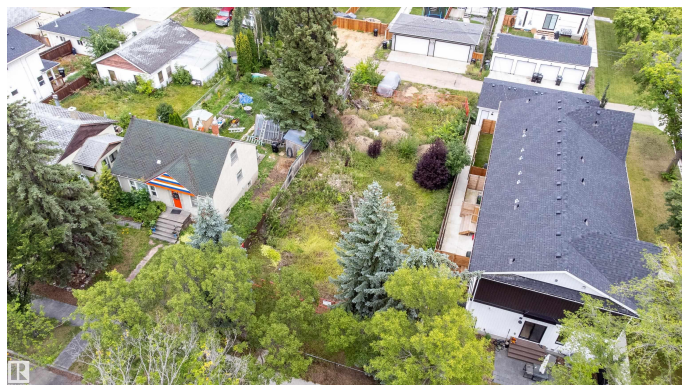
MLS® #E4454360

\$439,900

0 Bedroom, 0.00 Bathroom,
Single Family on 0.00 Acres

Prince Charles, Edmonton, AB

Exceptional infill opportunity in the desirable community of Prince Charles! This 50' x 141' RS-zoned lot has already been cleared and fully prepared—demolition is complete, services are in place, and full building permits and plans are approved. With recent zoning changes in Edmonton placing new restrictions on interior RS lots, this property offers a rare advantage: the existing permits and plans are grandfathered under the previous rules. That means you can build to the original approved design without the delays, costs, or limitations facing new applications. Skip months of waiting for demo, servicing, and approvals—this site is truly shovel-ready. Located on a quiet, tree-lined street close to schools, shopping, 124 Street, parks, and downtown, it's a turnkey lot in one of Edmonton's most active infill communities. A ready-to-go project with permits and plans in hand—opportunities like this are hard to find!



Essential Information

MLS® #	E4454360
Price	\$439,900
Bathrooms	0.00
Acres	0.00
Type	Single Family

Sub-Type Vacant Lot/Land
Status Active

Community Information

Address 12107 123 Street
Area Edmonton
Subdivision Prince Charles
City Edmonton
County ALBERTA
Province AB
Postal Code T5L 0H4

Amenities

Parking Spaces 5

Exterior

Exterior Features Back Lane, Paved Lane, Playground Nearby, Public Swimming Pool, Public Transportation, Schools, Shopping Nearby

Additional Information

Date Listed August 22nd, 2025
Days on Market 1
Zoning Zone 04

DATA IS DEEMED RELIABLE BUT IS NOT GUARANTEED ACCURATE BY THE REALTORS® ASSOCIATION OF EDMONTON. COPYRIGHT 2025 BY THE REALTORS® ASSOCIATION OF EDMONTON. ALL RIGHTS RESERVED.Trademarks are owned or controlled by the Canadian Real Estate Association (CREA) and identify real estate professionals who are members of CREA (REALTOR®, REALTORS®) and/or the quality of services they provide (MLS®, Multiple Listing Service®)
Listing information last updated on August 23rd, 2025 at 12:48pm MDT