

\$474,900 - 931 Morris Way, Leduc

MLS® #E4454335

\$474,900

3 Bedroom, 3.50 Bathroom, 1,389 sqft

Single Family on 0.00 Acres

Meadowview Park_LEDU, Leduc, AB

Step inside this show-stopping home, where luxury meets artistry at every turn. Bask in the glow of 3 fireplaces & dazzling live-edge accents—maple handrails & exquisite acacia wood doors set the tone. The beautiful kitchen boasts a 7' quartz island, apron sink with touch tap, sleek black SS appliances, & ingenious Rev-A-Shelf organizers. A convenient main floor laundry with large-capacity washer/dryer with pedestals. Unwind in the inviting bonus room, warmed by a cozy fireplace, custom built-ins, & a dramatic glass-walled stairwell. The spa-inspired ensuite dazzles with a walk-in shower, towel warmer, waterfall faucet, & chic wall sconces. Downstair, a retreat awaits- offering a wetbar with stone feature-wall & retro fridge, 3rd bedroom, a full bath with another towel warmer. Professionally landscaped yard with low-maintenance design offering a charming paved stone patio, dry creek bed, mature perennials, storage shed, and full fence. Additionally an oversized dbl detached garage that is fully finished.

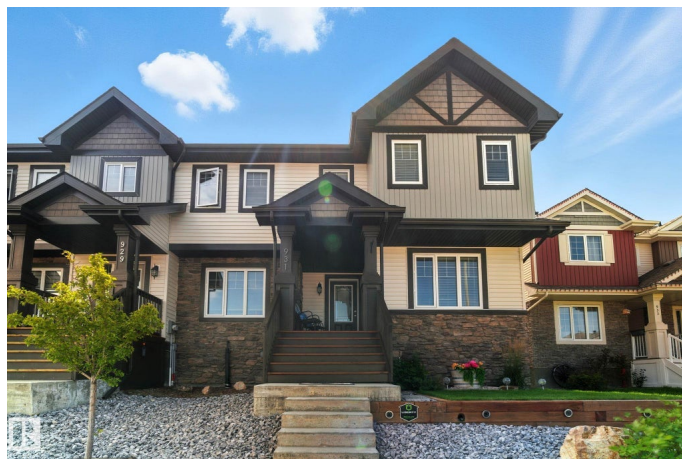
Built in 2017

Essential Information

MLS® # E4454335

Price \$474,900

Bedrooms 3



| | |
|----------------|----------------------|
| Bathrooms | 3.50 |
| Full Baths | 3 |
| Half Baths | 1 |
| Square Footage | 1,389 |
| Acres | 0.00 |
| Year Built | 2017 |
| Type | Single Family |
| Sub-Type | Residential Attached |
| Style | 2 Storey |
| Status | Active |

Community Information

| | |
|-------------|----------------------|
| Address | 931 Morris Way |
| Area | Leduc |
| Subdivision | Meadowview Park_LEDU |
| City | Leduc |
| County | ALBERTA |
| Province | AB |
| Postal Code | T9E 1G1 |

Amenities

| | |
|-----------|--------------------------------|
| Amenities | Patio |
| Parking | Double Garage Detached, Heated |

Interior

| | |
|-------------------|--|
| Interior Features | ensuite bathroom |
| Appliances | Air Conditioning-Central, Dishwasher-Built-In, Dryer, Garage Control, Garage Opener, Microwave Hood Fan, Washer, Window Coverings, Refrigerators-Two |
| Heating | Forced Air-1, Natural Gas |
| Fireplace | Yes |
| Fireplaces | Insert |
| Stories | 2 |
| Has Basement | Yes |
| Basement | Full, Finished |

Exterior

| | |
|-------------------|---|
| Exterior | Wood, Vinyl |
| Exterior Features | Back Lane, Fenced, Landscaped, Low Maintenance Landscape, |

Playground Nearby, Schools, Shopping Nearby

| | |
|--------------|--------------------|
| Roof | Asphalt Shingles |
| Construction | Wood, Vinyl |
| Foundation | Concrete Perimeter |

Additional Information

| | |
|----------------|-------------------|
| Date Listed | August 21st, 2025 |
| Days on Market | 2 |
| Zoning | Zone 81 |

DATA IS DEEMED RELIABLE BUT IS NOT GUARANTEED ACCURATE BY THE REALTORS® ASSOCIATION OF EDMONTON. COPYRIGHT 2025 BY THE REALTORS® ASSOCIATION OF EDMONTON. ALL RIGHTS RESERVED.Trademarks are owned or controlled by the Canadian Real Estate Association (CREA) and identify real estate professionals who are members of CREA (REALTOR®, REALTORS®) and/or the quality of services they provide (MLS®, Multiple Listing Service®)

Listing information last updated on August 23rd, 2025 at 5:47am MDT