

\$886,000 - 8 Greenwood Place, St. Albert

MLS® #E4454237

\$886,000

4 Bedroom, 3.50 Bathroom, 2,442 sqft

Single Family on 0.00 Acres

Grandin, St. Albert, AB

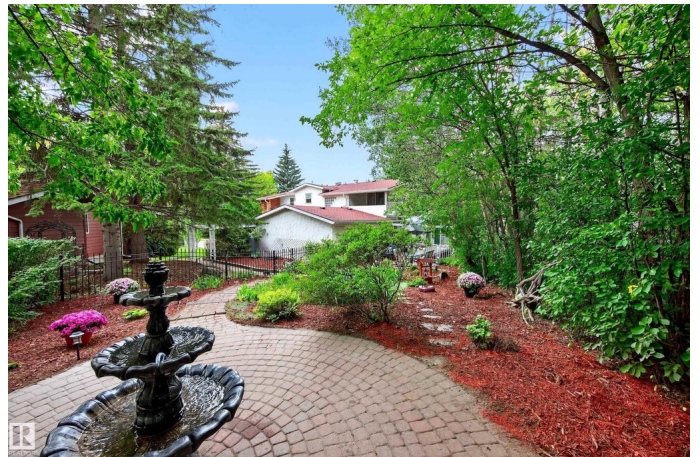
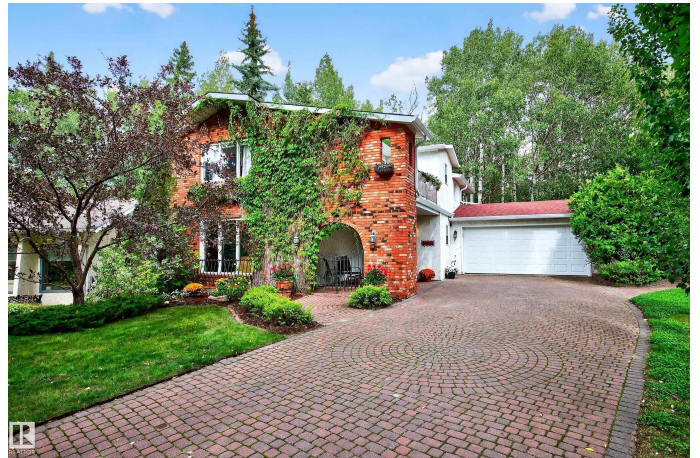
Exceptional, rare opportunity to own one of St. Albert's largest ravine backing lots. This executive, walkout 2 storey home with European appeal exemplifies class and privacy on nearly a half acre lot on Grandin Ravine-just steps to river valley trails and the Farmer's Market. This 4 bedroom, 3.5 bath home features over 3400 sq ft of living space, plus 4 balconies and 3 patios- providing maximum exposure to the tranquil forest views. The main level features an expansive maple kitchen with gas stove, and a vaulted breakfast nook surrounded by windows and a picturesque backdrop. The upper level has a renovated 5 pc main bath, 2 large bedrooms and a spacious, primary retreat with vaulted ceiling, 3 pc ensuite, wood burning fireplace and a private balcony. In addition, there's a dream den/library with gas fireplace framed amongst the trees. The basement highlights a home theatre and a large rec room with walkout access to the 8 person therapeutic hot tub. Enjoy a walkable lifestyle without sacrificing privacy.

Built in 1974

Essential Information

MLS® # E4454237

Price \$886,000



Bedrooms	4
Bathrooms	3.50
Full Baths	3
Half Baths	1
Square Footage	2,442
Acres	0.00
Year Built	1974
Type	Single Family
Sub-Type	Detached Single Family
Style	2 Storey
Status	Active

Community Information

Address	8 Greenwood Place
Area	St. Albert
Subdivision	Grandin
City	St. Albert
County	ALBERTA
Province	AB
Postal Code	T8N 2H5

Amenities

Amenities	Deck, Fire Pit, Hot Tub, No Smoking Home, Parking-Extra, Skylight, Vaulted Ceiling, Walkout Basement
Parking	Double Garage Attached

Interior

Interior Features	ensuite bathroom
Appliances	Dishwasher-Built-In, Dryer, Freezer, Garage Opener, Hood Fan, Oven-Built-In, Refrigerator, Stove-Countertop Gas, Vacuum System Attachments, Vacuum Systems, Washer, Window Coverings, Projector, Hot Tub
Heating	Forced Air-2, Natural Gas
Fireplace	Yes
Fireplaces	Tile Surround
Stories	3
Has Basement	Yes
Basement	Full, Finished

Exterior

Exterior	Wood, Brick, Stucco
Exterior Features	Backs Onto Park/Trees, Landscaped, Park/Reserve, Picnic Area, Playground Nearby, Private Setting, Ravine View, Schools, Shopping Nearby
Roof	Asphalt Shingles
Construction	Wood, Brick, Stucco
Foundation	Concrete Perimeter

School Information

Elementary	Wild Rose Elementary
Middle	Ecole Hillgrove School
High	Paul Kane High School

Additional Information

Date Listed	August 22nd, 2025
Days on Market	1
Zoning	Zone 24

DATA IS DEEMED RELIABLE BUT IS NOT GUARANTEED ACCURATE BY THE REALTORS® ASSOCIATION OF EDMONTON. COPYRIGHT 2025 BY THE REALTORS® ASSOCIATION OF EDMONTON. ALL RIGHTS RESERVED. Trademarks are owned or controlled by the Canadian Real Estate Association (CREA) and identify real estate professionals who are members of CREA (REALTOR®, REALTORS®) and/or the quality of services they provide (MLS®, Multiple Listing Service®)

Listing information last updated on August 23rd, 2025 at 5:47am MDT