

\$265,500 - 19 100 Westridge Crescent, Spruce Grove

MLS® #E4453151

\$265,500

3 Bedroom, 1.50 Bathroom, 1,177 sqft
Condo / Townhouse on 0.00 Acres

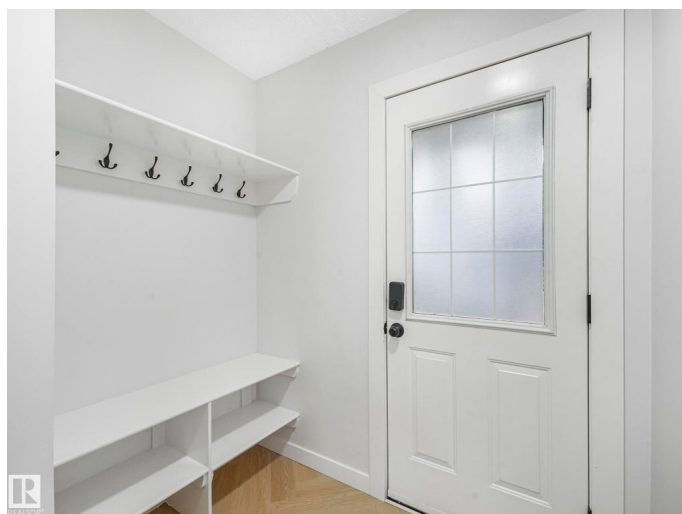
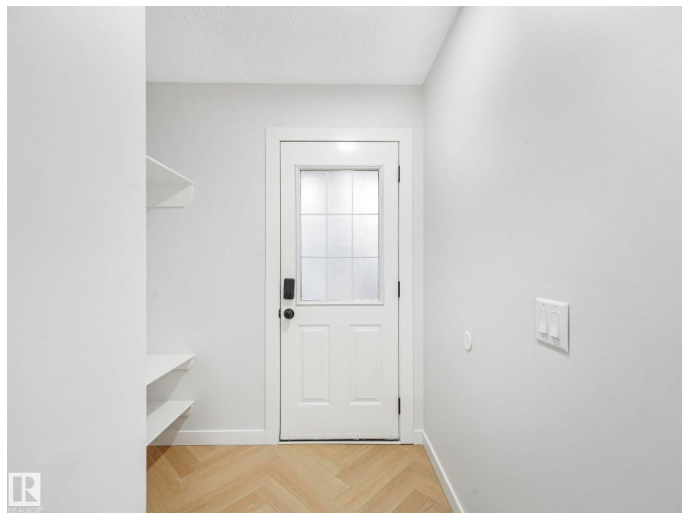
West Grove, Spruce Grove, AB

This 3 bedroom end unit is in the best location in the complex siding a park area. Lavish upgrades include vinyl on the main floor, brand new carpet, LED lighting accenting in the feature walls of living and stair walls, featured wall in the master bedroom, brand new paint, and modern lights. Kitchen has been updated with new cabinets, sink, faucet, quartz counter-top, backsplash and stainless steel kitchen appliances. The bathrooms are renovated with new vanities, countertops, vessel sinks, upgraded mirrors, Lav faucets and lightings. The fenced yard features a wooden patio deck and shed. Also included are 2 parking stalls right outside of the front door. This excellent home is also in a great location with all the amenities close by.

Built in 1981

Essential Information

MLS® #	E4453151
Price	\$265,500
Bedrooms	3
Bathrooms	1.50
Full Baths	1
Half Baths	1
Square Footage	1,177
Acres	0.00



Year Built	1981
Type	Condo / Townhouse
Sub-Type	Townhouse
Style	2 Storey
Status	Active

Community Information

Address	19 100 Westridge Crescent
Area	Spruce Grove
Subdivision	West Grove
City	Spruce Grove
County	ALBERTA
Province	AB
Postal Code	T7X 1R7

Amenities

Amenities	Parking-Plug-Ins
Parking	2 Outdoor Stalls

Interior

Appliances	Dishwasher-Built-In, Dryer, Refrigerator, Stove-Electric, Washer
Heating	Forced Air-1, Natural Gas
Stories	3
Has Basement	Yes
Basement	Full, Finished

Exterior

Exterior	Wood, Vinyl
Exterior Features	Fenced, Shopping Nearby
Roof	Asphalt Shingles
Construction	Wood, Vinyl
Foundation	Concrete Perimeter

Additional Information

Date Listed	August 14th, 2025
Days on Market	10
Zoning	Zone 91
Condo Fee	\$343

EDMONTON. COPYRIGHT 2025 BY THE REALTORS® ASSOCIATION OF EDMONTON. ALL RIGHTS RESERVED. Trademarks are owned or controlled by the Canadian Real Estate Association (CREA) and identify real estate professionals who are members of CREA (REALTOR®, REALTORS®) and/or the quality of services they provide (MLS®, Multiple Listing Service®)

Listing information last updated on August 24th, 2025 at 3:32am MDT