

Courtesy Of David Tomczyk Of RE/MAX Excellence

\$250,000 - 110 10520 56 Avenue, Edmonton

MLS® #E4452953

\$250,000

2 Bedroom, 2.00 Bathroom, 921 sqft
Condo / Townhouse on 0.00 Acres

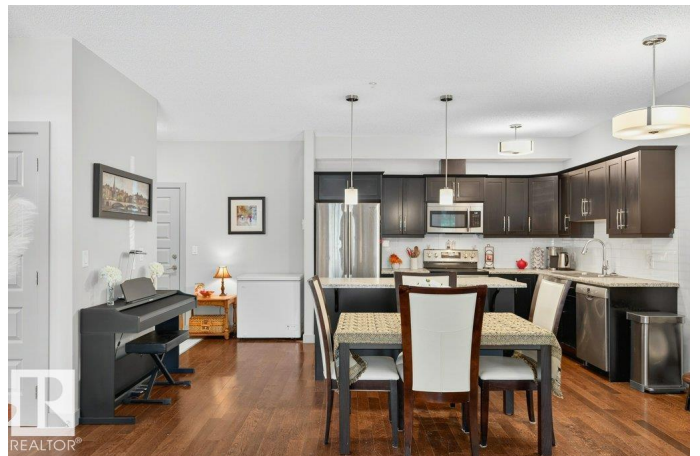
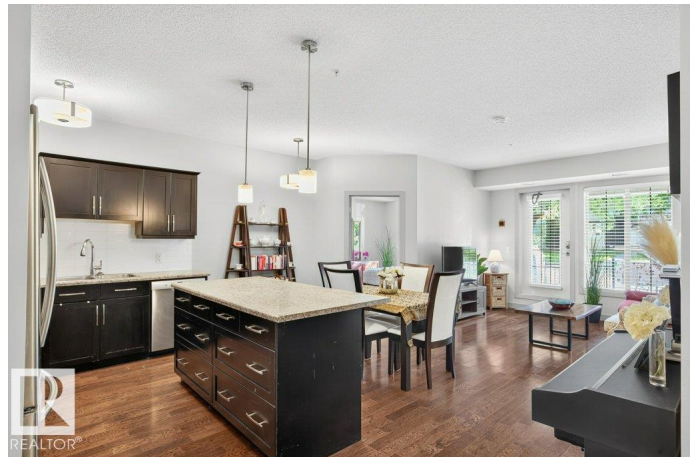
Pleasantview (Edmonton), Edmonton, AB

Welcome to Pleasantview! This beautiful 2-bedroom, 2-bathroom condominium offers a perfect blend of comfort, convenience, and style. The open-concept layout features hardwood and ceramic tile floors, a modern kitchen with stainless steel appliances, and a bright living area that opens to a covered patio complete with a gas BBQ hookup. The spacious primary bedroom boasts a walk-through closet and private 3-piece ensuite, while the second bedroom is ideally located next to the 4-piece main bath. Additional highlights include central A/C, a titled underground parking stall with storage, and proximity to everything you need. Located within walking distance of public transportation, schools, and Southgate Centre, with quick access to the U of A, Whitemud Drive, and Calgary Trail/Gateway Boulevard—this home truly checks all the boxes.

Built in 2010

Essential Information

MLS® #	E4452953
Price	\$250,000
Bedrooms	2
Bathrooms	2.00
Full Baths	2



Square Footage	921
Acres	0.00
Year Built	2010
Type	Condo / Townhouse
Sub-Type	Lowrise Apartment
Style	Single Level Apartment
Status	Active

Community Information

Address	110 10520 56 Avenue
Area	Edmonton
Subdivision	Pleasantview (Edmonton)
City	Edmonton
County	ALBERTA
Province	AB
Postal Code	T6H 0X7

Amenities

Amenities	Air Conditioner, Intercom, Parking-Visitor, Party Room, Patio, Secured Parking, Security Door, Sprinkler System-Fire, Storage-In-Suite, Storage Cage, Natural Gas BBQ Hookup
Parking Spaces	1
Parking	Heated, Underground

Interior

Interior Features	ensuite bathroom
Appliances	Dishwasher-Built-In, Microwave Hood Fan, Refrigerator, Stacked Washer/Dryer, Stove-Electric, Window Coverings
Heating	Heat Pump, Natural Gas
# of Stories	4
Stories	1
Has Basement	Yes
Basement	None, No Basement

Exterior

Exterior	Wood, Stucco
Exterior Features	Landscaped, Playground Nearby, Public Transportation, Schools, Shopping Nearby
Roof	Unknown

Construction	Wood, Stucco
Foundation	Concrete Perimeter

Additional Information

Date Listed	August 14th, 2025
Days on Market	14
Zoning	Zone 15
Condo Fee	\$484

DATA IS DEEMED RELIABLE BUT IS NOT GUARANTEED ACCURATE BY THE REALTORS® ASSOCIATION OF EDMONTON. COPYRIGHT 2025 BY THE REALTORS® ASSOCIATION OF EDMONTON. ALL RIGHTS RESERVED. Trademarks are owned or controlled by the Canadian Real Estate Association (CREA) and identify real estate professionals who are members of CREA (REALTOR®, REALTORS®) and/or the quality of services they provide (MLS®, Multiple Listing Service®)

Listing information last updated on August 28th, 2025 at 7:17am MDT