

## \$465,000 - 13123 85 Street, Edmonton

MLS® #E4449777

**\$465,000**

5 Bedroom, 2.00 Bathroom, 1,032 sqft

Single Family on 0.00 Acres

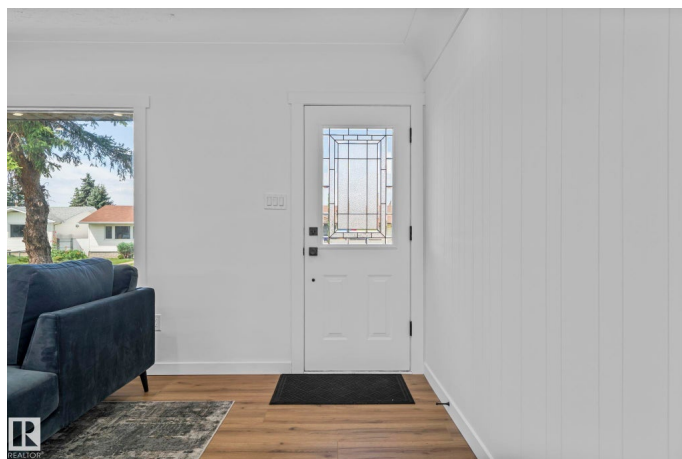
Killarney, Edmonton, AB

Welcome to this Gem of a home! Fully renovated from top to bottom custom bungalow in peaceful Killarney! Every detail has been thoughtfully updated, including a new roof, furnace, hot water tank, windows, high end flooring throughout & quartz countertops in both the kitchens & bathrooms. The chef's kitchen features sleek LG appliances, while the Fully Finished basement offers 2-bedrooms, 3 piece washroom, with second kitchen & separate entrance, perfect for in-law living! Enjoy the massive yard with RS zoning (approved for a garage suite or home-based business), an oversized garage & lots of space for RV/boat parking. This home is perfect for families or savvy investor, located close to all amenities, schools, and transit.

Built in 1958

### Essential Information

MLS® #	E4449777
Price	\$465,000
Bedrooms	5
Bathrooms	2.00
Full Baths	2
Square Footage	1,032
Acres	0.00
Year Built	1958



Type	Single Family
Sub-Type	Detached Single Family
Style	Bungalow
Status	Active

### Community Information

Address	13123 85 Street
Area	Edmonton
Subdivision	Killarney
City	Edmonton
County	ALBERTA
Province	AB
Postal Code	T5E 2Z5

### Amenities

Amenities	Off Street Parking, Hot Water Natural Gas, No Animal Home, No Smoking Home, Vinyl Windows
Parking Spaces	4
Parking	Double Garage Detached, Rear Drive Access, RV Parking

### Interior

Appliances	Dishwasher-Built-In, Dryer, Garage Opener, Hood Fan, Washer, Refrigerators-Two, Stoves-Two
Heating	Forced Air-1, Natural Gas
Stories	2
Has Basement	Yes
Basement	Full, Finished

### Exterior

Exterior	Concrete, Stucco, Wood
Exterior Features	Back Lane, Fenced, Golf Nearby, Low Maintenance Landscape, Playground Nearby, Private Setting, Public Swimming Pool, Public Transportation, Schools
Roof	Asphalt Shingles
Construction	Concrete, Stucco, Wood
Foundation	Concrete Perimeter

### School Information

Elementary	Mee-Yah, St Angela
Middle	Major General Griesbach

High Archbishop O'Leary

**Additional Information**

Date Listed July 25th, 2025

Days on Market 31

Zoning Zone 02

DATA IS DEEMED RELIABLE BUT IS NOT GUARANTEED ACCURATE BY THE REALTORS® ASSOCIATION OF EDMONTON. COPYRIGHT 2025 BY THE REALTORS® ASSOCIATION OF EDMONTON. ALL RIGHTS RESERVED. Trademarks are owned or controlled by the Canadian Real Estate Association (CREA) and identify real estate professionals who are members of CREA (REALTOR®, REALTORS®) and/or the quality of services they provide (MLS®, Multiple Listing Service®)

Listing information last updated on August 25th, 2025 at 4:32pm MDT