

\$0 - 202 11830 111 Avenue, Edmonton

MLS® #E4446803

\$0

0 Bedroom, 0.00 Bathroom,
Retail on 0.00 Acres

Prince Rupert, Edmonton, AB

â€¢ Flexible main floor spaces suitable for a variety of professional/medical uses â€¢ Contemporary 2nd floor walk-up office â€¢ Excellent parking with 90Â± dedicated stalls â€¢ Strong Tenant mix featuring established restaurant/pub, medical users and more â€¢ Opportunity for pylon signage and/or exterior signage. â€¢ Great corner location fronting 119 St and 111 Avenue â€¢ Proximity to residential areas of Queen Mary Park, Westmount and Inglewood

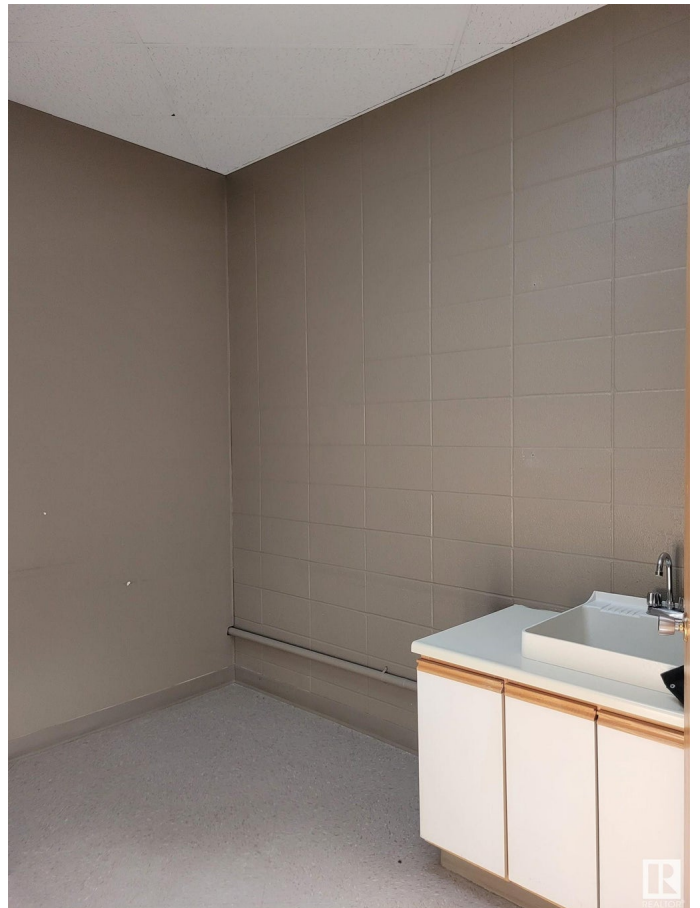
Built in 1977

Essential Information

MLS® #	E4446803
Bathrooms	0.00
Acres	0.00
Year Built	1977
Type	Retail
Status	Active

Community Information

Address	202 11830 111 Avenue
Area	Edmonton
Subdivision	Prince Rupert
City	Edmonton
County	ALBERTA
Province	AB



Postal Code T5G 0E1

Exterior

Exterior Mixed
Construction Mixed

Additional Information

Date Listed July 9th, 2025
Days on Market 10
Zoning Zone 08

DATA IS DEEMED RELIABLE BUT IS NOT GUARANTEED ACCURATE BY THE REALTORS® ASSOCIATION OF EDMONTON. COPYRIGHT 2025 BY THE REALTORS® ASSOCIATION OF EDMONTON. ALL RIGHTS RESERVED.Trademarks are owned or controlled by the Canadian Real Estate Association (CREA) and identify real estate professionals who are members of CREA (REALTOR®, REALTORS®) and/or the quality of services they provide (MLS®, Multiple Listing Service®)
Listing information last updated on July 19th, 2025 at 2:32pm MDT