

\$425,000 - 1909 24 Street, Edmonton

MLS® #E4443835

\$425,000

4 Bedroom, 3.50 Bathroom, 1,455 sqft

Single Family on 0.00 Acres

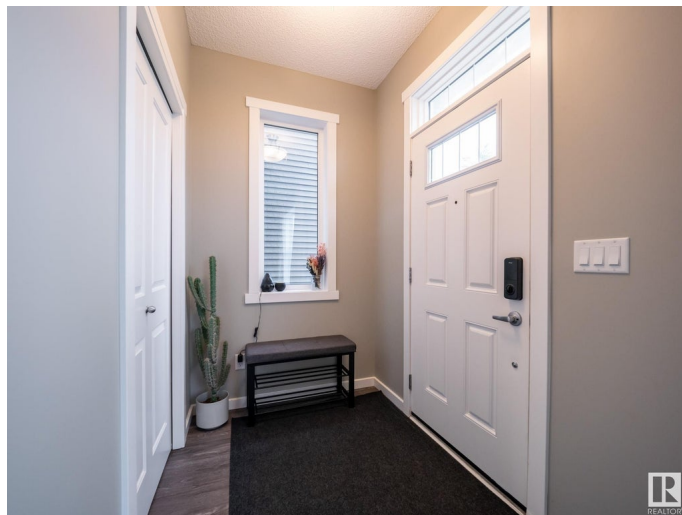
Laurel, Edmonton, AB

Looking for style, space, and a place that just fits? This Laurel townhome has the look, the layout, and the location! The kitchen shines with sleek cabinets, quartz counters, stainless steel appliances, tile backsplash, and an eat-in island—all open to the dining area. The bright living room features large windows and a beautiful fireplace. Upstairs, the primary bedroom includes a walk-in closet and 3-piece ensuite with stand-up shower. Two more bedrooms and a full bath complete the upper floor. The finished basement adds a spacious family room, 4th bedroom, full bath, laundry, and storage. With a fully landscaped yard, deck, and double detached garage, this END unit is the whole package!

Built in 2018

Essential Information

| | |
|----------------|-----------|
| MLS® # | E4443835 |
| Price | \$425,000 |
| Bedrooms | 4 |
| Bathrooms | 3.50 |
| Full Baths | 3 |
| Half Baths | 1 |
| Square Footage | 1,455 |
| Acres | 0.00 |
| Year Built | 2018 |



| | |
|----------|----------------------|
| Type | Single Family |
| Sub-Type | Residential Attached |
| Style | 2 Storey |
| Status | Active |

Community Information

| | |
|-------------|----------------|
| Address | 1909 24 Street |
| Area | Edmonton |
| Subdivision | Laurel |
| City | Edmonton |
| County | ALBERTA |
| Province | AB |
| Postal Code | T6T 2C9 |

Amenities

| | |
|-----------|--|
| Amenities | Air Conditioner, Carbon Monoxide Detectors, Ceiling 9 ft., Deck, Detectors Smoke, Smart/Program. Thermostat, Vinyl Windows |
| Parking | Double Garage Detached |

Interior

| | |
|-------------------|--|
| Interior Features | ensuite bathroom |
| Appliances | Air Conditioning-Central, Dishwasher-Built-In, Dryer, Microwave Hood Fan, Refrigerator, Stove-Electric, Washer |
| Heating | Forced Air-1, Natural Gas |
| Stories | 3 |
| Has Basement | Yes |
| Basement | Full, Finished |

Exterior

| | |
|-------------------|---|
| Exterior | Wood, Vinyl |
| Exterior Features | Back Lane, Fenced, Landscaped, Playground Nearby, Public Transportation, Schools, Shopping Nearby |
| Roof | Asphalt Shingles |
| Construction | Wood, Vinyl |
| Foundation | Concrete Perimeter |

Additional Information

| | |
|----------------|-----------------|
| Date Listed | June 23rd, 2025 |
| Days on Market | 12 |
| Zoning | Zone 30 |

DATA IS DEEMED RELIABLE BUT IS NOT GUARANTEED ACCURATE BY THE REALTORS® ASSOCIATION OF EDMONTON. COPYRIGHT 2025 BY THE REALTORS® ASSOCIATION OF EDMONTON. ALL RIGHTS RESERVED.Trademarks are owned or controlled by the Canadian Real Estate Association (CREA) and identify real estate professionals who are members of CREA (REALTOR®, REALTORS®) and/or the quality of services they provide (MLS®, Multiple Listing Service®)

Listing information last updated on July 5th, 2025 at 3:47am MDT