

\$574,999 - 18611 86 Avenue, Edmonton

MLS® #E4443399

\$574,999

6 Bedroom, 3.00 Bathroom, 1,509 sqft

Single Family on 0.00 Acres

Aldergrove, Edmonton, AB

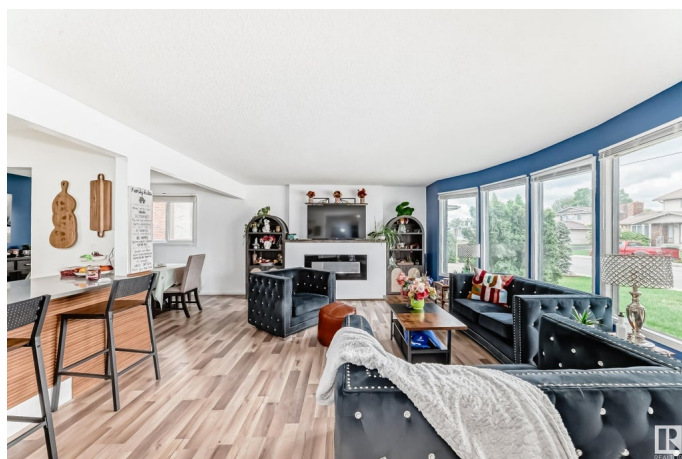
This beautifully updated 2800+ sq ft bungalow in desirable Aldergrove offers central A/C, modern finishes, thoughtful upgrades, and plenty of space for the whole family. Tucked away on a quiet, tree-lined street, the home sits on a private large, south-facing lot—perfect for soaking up the sun, gardening, or hosting summer barbecues. Step inside to a bright and open layout featuring a stylish kitchen with crisp white cabinetry, quartz countertops, newer appliances, and a spacious island that flows effortlessly into the main living area. Look closely for the hidden TV in the living room! The main floor offers three generous bedrooms, including a lovely primary suite with an ensuite and excellent closet space. You™ll also love the convenience of main floor laundry. Downstairs, the fully finished basement features three additional bedrooms, a third full bathroom, a large rec room, and ample storage space. Located close to schools, parks, transit, WEM, and major commuter routes.

Built in 1975

Essential Information

MLS® # E4443399

Price \$574,999



Bedrooms	6
Bathrooms	3.00
Full Baths	3
Square Footage	1,509
Acres	0.00
Year Built	1975
Type	Single Family
Sub-Type	Detached Single Family
Style	Bungalow
Status	Active

Community Information

Address	18611 86 Avenue
Area	Edmonton
Subdivision	Aldergrove
City	Edmonton
County	ALBERTA
Province	AB
Postal Code	T5T 1J3

Amenities

Amenities	Air Conditioner
Parking	2 Outdoor Stalls, Double Garage Attached

Interior

Interior Features	ensuite bathroom
Appliances	Air Conditioning-Central, Dishwasher-Built-In, Dryer, Hood Fan, Refrigerator, Storage Shed, Stove-Electric, Washer
Heating	Forced Air-1, Natural Gas
Stories	2
Has Basement	Yes
Basement	Full, Finished

Exterior

Exterior	Wood, Stucco, Vinyl
Exterior Features	Fenced, Landscaped, Playground Nearby
Roof	Asphalt Shingles
Construction	Wood, Stucco, Vinyl
Foundation	Concrete Perimeter

Additional Information

Date Listed June 20th, 2025
Days on Market 13
Zoning Zone 20

DATA IS DEEMED RELIABLE BUT IS NOT GUARANTEED ACCURATE BY THE REALTORS® ASSOCIATION OF EDMONTON. COPYRIGHT 2025 BY THE REALTORS® ASSOCIATION OF EDMONTON. ALL RIGHTS RESERVED.Trademarks are owned or controlled by the Canadian Real Estate Association (CREA) and identify real estate professionals who are members of CREA (REALTOR®, REALTORS®) and/or the quality of services they provide (MLS®, Multiple Listing Service®)
Listing information last updated on July 2nd, 2025 at 10:47pm MDT