

## \$189,000 - 10 14110 80 St, Edmonton

MLS® #E4443293

**\$189,000**

3 Bedroom, 1.00 Bathroom, 943 sqft

Condo / Townhouse on 0.00 Acres

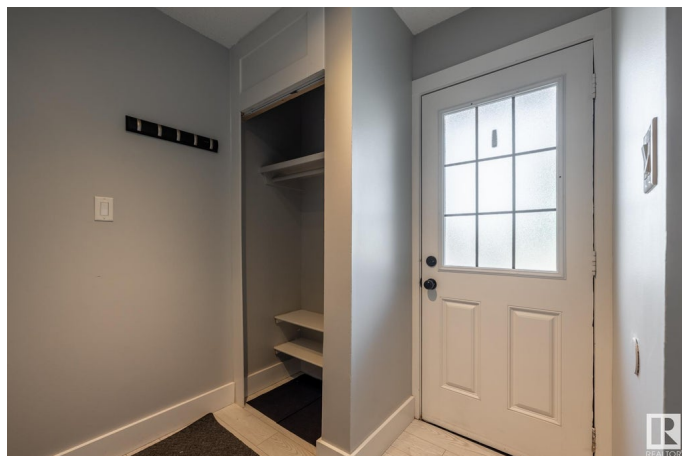
Kildare, Edmonton, AB

Welcome to Norshire Gardens this family friendly community is perfect for Investors or First time Homebuyers! Beautifully renovated 3 bedroom Townhouse freshly painted, with laminate flooring on the main floor and new carpet on the stairs, second floor and basement. This townhouse has a good size Master bedroom and 2 regular size bedroom with a 4 pcs bathroom on the second floor on the main floor is a bright living room and great kitchen with stainless steel appliances. The basement is finished. The property has Air Conditioning. Fully fenced in front yard where you can enjoy the summer. This property is a must see!

Built in 1971

### Essential Information

MLS® #	E4443293
Price	\$189,000
Bedrooms	3
Bathrooms	1.00
Full Baths	1
Square Footage	943
Acres	0.00
Year Built	1971
Type	Condo / Townhouse
Sub-Type	Townhouse



Style	2 Storey
Status	Active

### Community Information

Address	10 14110 80 St
Area	Edmonton
Subdivision	Kildare
City	Edmonton
County	ALBERTA
Province	AB
Postal Code	T5C 1L6

### Amenities

Amenities	Detectors Smoke, Parking-Plug-Ins, Vinyl Windows
Parking	Stall

### Interior

Appliances	Air Conditioning-Central, Dishwasher-Built-In, Dryer, Microwave Hood Fan, Refrigerator, Stove-Electric, Washer
Heating	Forced Air-1, Natural Gas
Stories	3
Has Basement	Yes
Basement	Full, Finished

### Exterior

Exterior	Wood, Stucco
Exterior Features	Fenced, Flat Site, Landscaped, Public Transportation, Schools
Roof	Asphalt Shingles
Construction	Wood, Stucco
Foundation	Concrete Perimeter

### Additional Information

Date Listed	June 19th, 2025
Days on Market	20
Zoning	Zone 02
Condo Fee	\$370

DATA IS DEEMED RELIABLE BUT IS NOT GUARANTEED ACCURATE BY THE REALTORS® ASSOCIATION OF EDMONTON. COPYRIGHT 2025 BY THE REALTORS® ASSOCIATION OF EDMONTON. ALL RIGHTS RESERVED. Trademarks are owned or controlled by the Canadian Real Estate Association (CREA) and identify real estate professionals who are members of CREA (REALTOR®, REALTORS®) and/or the quality of services they

provide (MLS®®, Multiple Listing Service®®)  
Listing information last updated on July 9th, 2025 at 1:02pm MDT