

## \$719,900 - 10 Edgefield Way, St. Albert

MLS® #E4442608

**\$719,900**

4 Bedroom, 3.00 Bathroom, 2,445 sqft

Single Family on 0.00 Acres

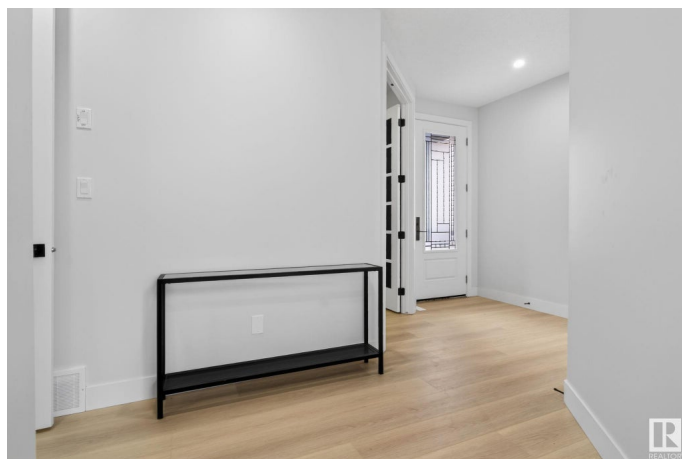
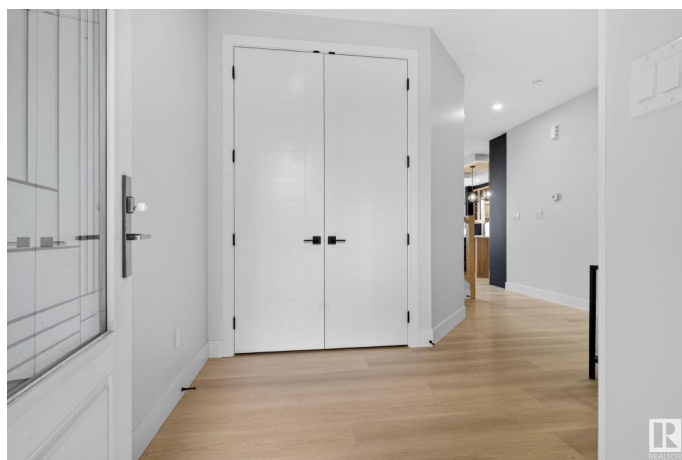
Erin Ridge North, St. Albert, AB

Welcome to your dream home at 10 Edgefield Way! This stunner features a main floor den/bedroom with a full bathroom, spacious mudroom, walk-through pantry, HUGE upgraded kitchen with built-in appliances, and a stunning open to above living room and feature wall. On the second level you have massive primary bedroom with a 5 piece bath that leads to a walk-in closet with MDF shelving. 3 additional bedrooms, a full bathroom, bonus room, and laundry with cabinets and a sink. Upgrades include 8ft doors throughout, bidets on all toilets, pot filler by cooktop, jetted shower in primary ensuite, upgraded lighting, feature walls, and rear concrete pad. Premium home with premium finishes. Must see.

Built in 2025

### Essential Information

MLS® #	E4442608
Price	\$719,900
Bedrooms	4
Bathrooms	3.00
Full Baths	3
Square Footage	2,445
Acres	0.00
Year Built	2025



Type	Single Family
Sub-Type	Detached Single Family
Style	2 Storey
Status	Active

### Community Information

Address	10 Edgefield Way
Area	St. Albert
Subdivision	Erin Ridge North
City	St. Albert
County	ALBERTA
Province	AB
Postal Code	T8N 8A1

### Amenities

Amenities	See Remarks
Parking	Double Garage Attached

### Interior

Interior Features	ensuite bathroom
Appliances	Dishwasher-Built-In, Freezer, Hood Fan, Oven-Built-In, Oven-Microwave, Refrigerator, Stove-Countertop Electric, Wine/Beverage Cooler
Heating	Forced Air-1, Natural Gas
Fireplace	Yes
Fireplaces	Insert
Stories	2
Has Basement	Yes
Basement	Full, Unfinished

### Exterior

Exterior	Wood, Stone, Vinyl
Exterior Features	See Remarks
Roof	Asphalt Shingles
Construction	Wood, Stone, Vinyl
Foundation	Concrete Perimeter

### Additional Information

Date Listed	June 16th, 2025
-------------	-----------------

Days on Market 1

Zoning Zone 24

DATA IS DEEMED RELIABLE BUT IS NOT GUARANTEED ACCURATE BY THE REALTORS® ASSOCIATION OF EDMONTON. COPYRIGHT 2025 BY THE REALTORS® ASSOCIATION OF EDMONTON. ALL RIGHTS RESERVED. Trademarks are owned or controlled by the Canadian Real Estate Association (CREA) and identify real estate professionals who are members of CREA (REALTOR®, REALTORS®) and/or the quality of services they provide (MLS®, Multiple Listing Service®)

Listing information last updated on June 16th, 2025 at 11:32pm MDT