

\$229,900 - 12138 25 Avenue, Edmonton

MLS® #E4440179

\$229,900

3 Bedroom, 1.50 Bathroom, 1,056 sqft
Condo / Townhouse on 0.00 Acres

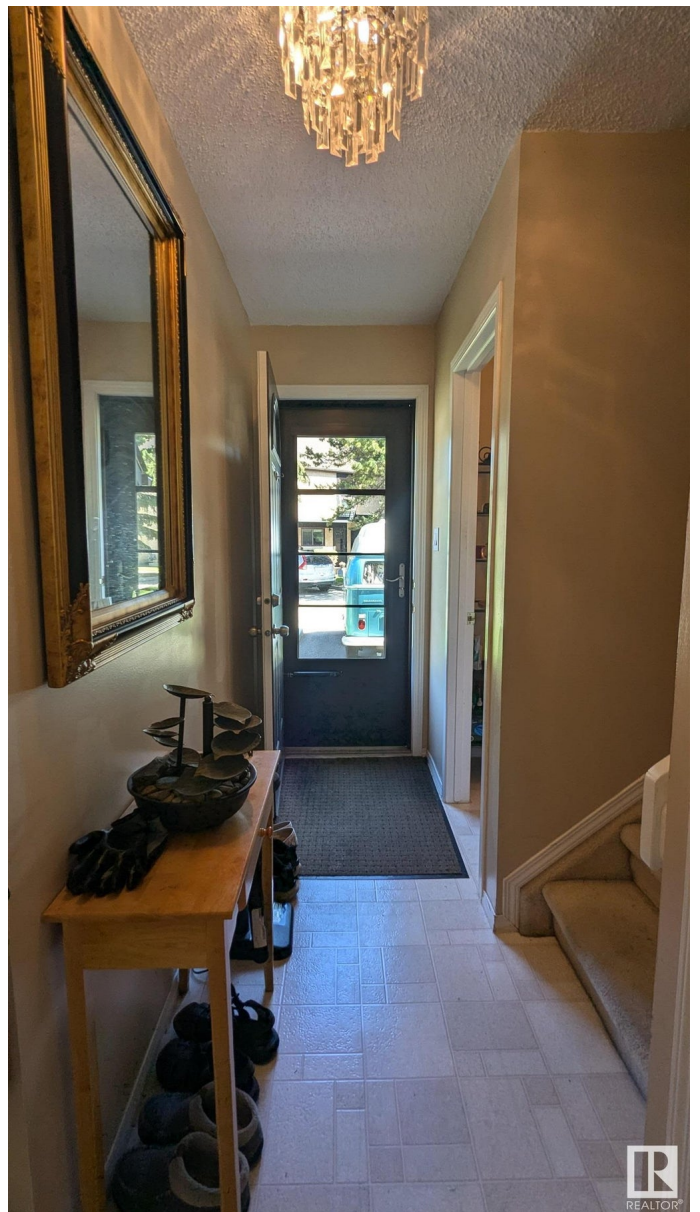
Blue Quill Estates, Edmonton, AB

Welcome to Lockhart Gardens! This well-maintained 1,150 sq. ft. townhome offers a prime location backing onto a large green space and playgroundâ€”perfect for families, pet owners, or those seeking a peaceful setting. Step inside to a functional and inviting layout featuring a U-shaped kitchen that flows into the dining area, a cozy living room with a fireplace, and patio doors leading to your private outdoor spaceâ€”ideal for relaxing or bird watching. The main floor also includes a convenient half-bathroom and a private storage area. Upstairs, you'll find three comfortable bedrooms and a full bathroom, offering ample space for a growing family or home office needs. Additional features: 2 pets allowed (with board approval). Energized parking stall directly in front of the unit. Additional parking stalls available for rent through the board. High efficiency furnace. Excellent long-term tenant in place and willing to stayâ€”great opportunity for investors!

Built in 1978

Essential Information

MLS® #	E4440179
Price	\$229,900
Bedrooms	3
Bathrooms	1.50



Full Baths	1
Half Baths	1
Square Footage	1,056
Acres	0.00
Year Built	1978
Type	Condo / Townhouse
Sub-Type	Townhouse
Style	2 Storey
Status	Active

Community Information

Address	12138 25 Avenue
Area	Edmonton
Subdivision	Blue Quill Estates
City	Edmonton
County	ALBERTA
Province	AB
Postal Code	T6J 4L4

Amenities

Amenities	No Animal Home, No Smoking Home, Parking-Extra, Parking-Visitor
Parking	Stall

Interior

Interior Features	ensuite bathroom
Appliances	Dishwasher-Built-In, Dryer, Microwave Hood Fan, Refrigerator, Stove-Electric, Washer
Heating	Forced Air-1, Natural Gas
Fireplace	Yes
Fireplaces	Mantel, Tile Surround
Stories	2
Has Basement	Yes
Basement	Full, Unfinished

Exterior

Exterior	Wood, Stucco, Hardie Board Siding
Exterior Features	Backs Onto Park/Trees, Landscaped, No Back Lane, Picnic Area, Playground Nearby, Schools, Shopping Nearby, Ski Hill Nearby
Roof	Asphalt Shingles

Construction Wood, Stucco, Hardie Board
Foundation Concrete Perimeter



Additional Information

Date Listed June 3rd, 2025
Days on Market 16
Zoning Zone 16
Condo Fee \$435

DATA IS DEEMED RELIABLE BUT IS NOT GUARANTEED ACCURATE BY THE REALTORS® ASSOCIATION OF EDMONTON. COPYRIGHT 2025 BY THE REALTORS® ASSOCIATION OF EDMONTON. ALL RIGHTS RESERVED.Trademarks are owned or controlled by the Canadian Real Estate Association (CREA) and identify real estate professionals who are members of CREA (REALTOR®, REALTORS®) and/or the quality of services they provide (MLS®, Multiple Listing Service®)
Listing information last updated on June 19th, 2025 at 2:17am MDT