

\$545,000 - 2004 24 Street, Edmonton

MLS® #E4439878

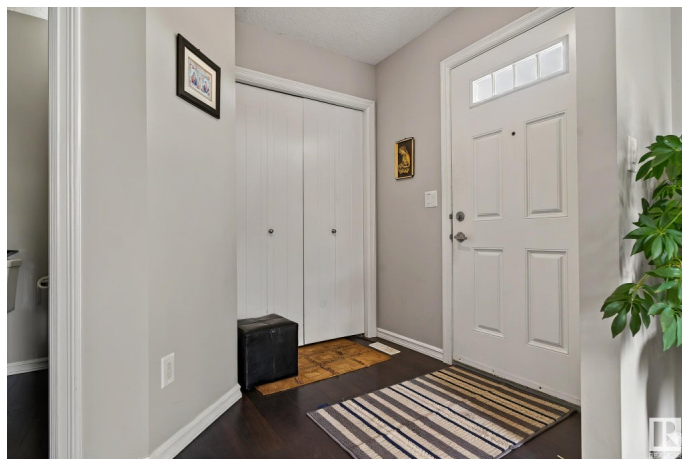
\$545,000

5 Bedroom, 3.50 Bathroom, 1,611 sqft

Single Family on 0.00 Acres

Laurel, Edmonton, AB

Set on a prime corner lot facing a peaceful park, this 5-bedroom, 3.5-bathroom home offers spacious, flexible living in the heart of Laurel. Step into a light-filled layout featuring an open-concept main floor and a cozy front family room perfect for work or play. The kitchen, living, and dining areas flow seamlessly—ideal for modern family life. Upstairs you'll find three generously sized bedrooms, including a primary with a full ensuite and scenic park views. A partially finished basement adds two more bedrooms, a full bath, and extra living space for guests, teens, or hobbies. Outside, enjoy the expansive deck—perfect for summer barbecues—plus an insulated double garage for year-round comfort. Located just steps from schools, shopping, walking trails, and transit, this well-maintained home delivers lifestyle, location, and long-term value. Don't miss your chance to live in one of Edmonton's most family-friendly communities!



Built in 2015

Essential Information

MLS® #	E4439878
Price	\$545,000
Bedrooms	5
Bathrooms	3.50

Full Baths	3
Half Baths	1
Square Footage	1,611
Acres	0.00
Year Built	2015
Type	Single Family
Sub-Type	Detached Single Family
Style	2 Storey
Status	Active

Community Information

Address	2004 24 Street
Area	Edmonton
Subdivision	Laurel
City	Edmonton
County	ALBERTA
Province	AB
Postal Code	T6T 0Y8

Amenities

Amenities	Ceiling 9 ft., Deck, Detectors Smoke, Hot Water Natural Gas, See Remarks
Parking	Double Garage Detached, Insulated

Interior

Interior Features	ensuite bathroom
Appliances	Dishwasher-Built-In, Dryer, Garage Control, Microwave Hood Fan, Refrigerator, Stove-Electric, Washer, Window Coverings, See Remarks
Heating	Forced Air-1, Natural Gas
Stories	2
Has Basement	Yes
Basement	Full, Partially Finished

Exterior

Exterior	Wood, Vinyl
Exterior Features	Backs Onto Park/Trees, Corner Lot, Fenced, Landscaped, Playground Nearby, Schools, Shopping Nearby, See Remarks
Roof	Asphalt Shingles
Construction	Wood, Vinyl

Foundation Concrete Perimeter

School Information

Elementary Svend Hansen School
Middle A.Blair McPherson School
High Dr. Francis Whiskeyjack

Additional Information

Date Listed June 2nd, 2025
Days on Market 33
Zoning Zone 30

DATA IS DEEMED RELIABLE BUT IS NOT GUARANTEED ACCURATE BY THE REALTORS® ASSOCIATION OF EDMONTON. COPYRIGHT 2025 BY THE REALTORS® ASSOCIATION OF EDMONTON. ALL RIGHTS RESERVED.Trademarks are owned or controlled by the Canadian Real Estate Association (CREA) and identify real estate professionals who are members of CREA (REALTOR®, REALTORS®) and/or the quality of services they provide (MLS®, Multiple Listing Service®)
Listing information last updated on July 5th, 2025 at 3:02am MDT