

\$317,000 - 6 3075 Trelle Crescent, Edmonton

MLS® #E4439604

\$317,000

3 Bedroom, 1.50 Bathroom, 1,184 sqft

Condo / Townhouse on 0.00 Acres

Terwillegar Towne, Edmonton, AB

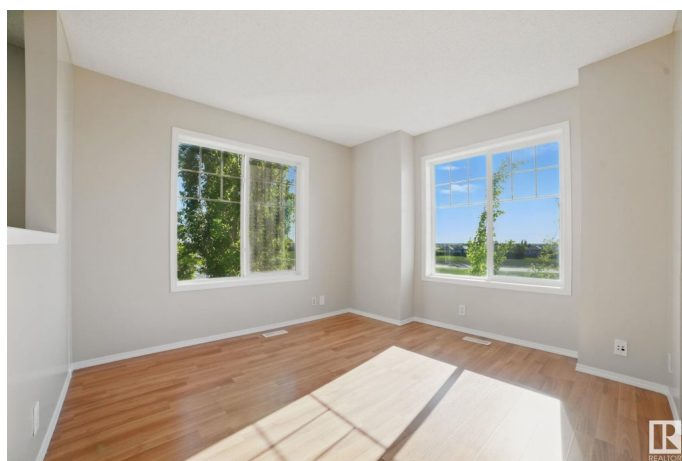
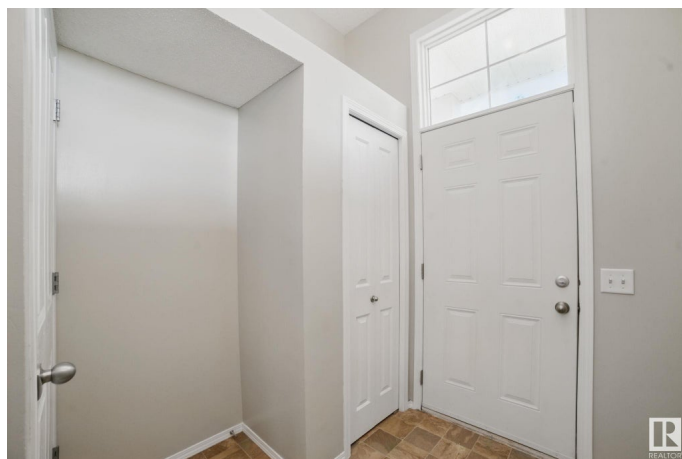
This townhouse offers a great open plan with comfy living room and dining area. The kitchen includes a breakfast bar, lots of storage and access to patio. A two-piece powder room is also located on the main. Upstairs, you'll find a 4-piece bathroom, 2 bedrooms plus primary bedroom with walk in closet. Double attached garage in the basement. along with laundry, mechanical room and storage area. Walking distance to many amenities.

Built in 2006

Essential Information

MLS® #	E4439604
Price	\$317,000
Bedrooms	3
Bathrooms	1.50
Full Baths	1
Half Baths	1
Square Footage	1,184
Acres	0.00
Year Built	2006
Type	Condo / Townhouse
Sub-Type	Townhouse
Style	2 Storey
Status	Active

Community Information



Address	6 3075 Trelle Crescent
Area	Edmonton
Subdivision	Terwillegar Towne
City	Edmonton
County	ALBERTA
Province	AB
Postal Code	T6R 3V5

Amenities

Amenities	Parking-Visitor, Patio
Parking	Double Garage Attached

Interior

Appliances	Dishwasher-Built-In, Dryer, Refrigerator, Stove-Electric, Washer
Heating	Forced Air-1, Natural Gas
Stories	2
Has Basement	Yes
Basement	Partial, Partially Finished

Exterior

Exterior	Wood, Vinyl
Exterior Features	Fenced, Landscaped
Roof	Asphalt Shingles
Construction	Wood, Vinyl
Foundation	Concrete Perimeter

School Information

Elementary	Monsignor William Irwin
Middle	Archbishop Joseph MacNeil
High	Lillian Osborne

Additional Information

Date Listed	May 30th, 2025
Days on Market	18
Zoning	Zone 14
Condo Fee	\$320

DATA IS DEEMED RELIABLE BUT IS NOT GUARANTEED ACCURATE BY THE REALTORS® ASSOCIATION OF EDMONTON. COPYRIGHT 2025 BY THE REALTORS® ASSOCIATION OF EDMONTON. ALL RIGHTS RESERVED. Trademarks are owned or controlled by the Canadian Real Estate Association (CREA) and identify real estate professionals who are members of CREA (REALTOR®, REALTORS®) and/or the quality of services they

provide (MLS®®, Multiple Listing Service®®)
Listing information last updated on June 17th, 2025 at 1:47am MDT