

Courtesy Of Jimmy Halabi Of Liv Real Estate

## \$449,900 - 8319 152b Avenue, Edmonton

MLS® #E4437128

**\$449,900**

5 Bedroom, 2.50 Bathroom, 1,787 sqft

Single Family on 0.00 Acres

Evansdale, Edmonton, AB

Fantastic location is where you would find this impressive 5 level split perfect for your growing & extended family. Nestled on a quiet street in the popular and beautiful community of Evansdale, this 5 Bedroom offers over 2100 sq of living space. Main level features an open concept living room adjacent to the newly renovated kitchen ideal for entertaining and family gatherings. Upper level you will find 3 impressive size bedrooms including a primary room with 3 piece ensuite. Recent upgrades include, new roof and eaves, windows, fence, luxury vinyl Plank flooring and kitchen with stainless steel appliances. Lower level also encompasses 2 more bedrooms and a den in the basement. Large backyard is fully landscaped and fenced perfect for gardening and summer gatherings. Evansdale community is home to nerby schools, parks/recreation and is close to all major amenities. Pride of Ownership is evident in this home and is a must see to appreciate the work done to this home.

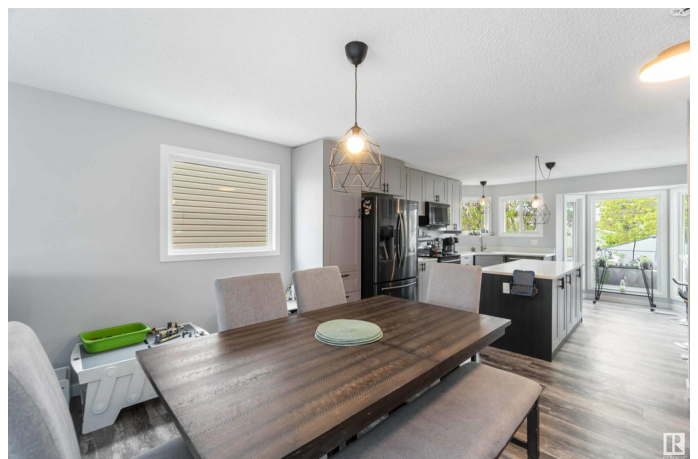
Built in 1981

### Essential Information

MLS® # E4437128

Price \$449,900

Bedrooms 5



Bathrooms	2.50
Full Baths	2
Half Baths	1
Square Footage	1,787
Acres	0.00
Year Built	1981
Type	Single Family
Sub-Type	Detached Single Family
Style	5 Level Split
Status	Active

### **Community Information**

Address	8319 152b Avenue
Area	Edmonton
Subdivision	Evansdale
City	Edmonton
County	ALBERTA
Province	AB
Postal Code	T5E 6G1

### **Amenities**

Amenities	Gazebo, No Animal Home, No Smoking Home
Parking	Double Garage Attached

### **Interior**

Interior Features	ensuite bathroom
Appliances	Dishwasher-Built-In, Dryer, Microwave Hood Fan, Refrigerator, Storage Shed, Stove-Electric, Washer, Window Coverings
Heating	Forced Air-2, Natural Gas
Fireplace	Yes
Fireplaces	Brick Facing
Stories	4
Has Basement	Yes
Basement	Full, Partially Finished

### **Exterior**

Exterior	Wood, Brick, Vinyl
Exterior Features	Fenced, Playground Nearby, Schools, Shopping Nearby
Roof	Asphalt Shingles

Construction	Wood, Brick, Vinyl
Foundation	Concrete Perimeter

**School Information**

Elementary	Evansdale
Middle	Londonderry
High	M.E. Lazert

**Additional Information**

Date Listed	May 17th, 2025
Days on Market	99
Zoning	Zone 02

DATA IS DEEMED RELIABLE BUT IS NOT GUARANTEED ACCURATE BY THE REALTORS® ASSOCIATION OF EDMONTON. COPYRIGHT 2025 BY THE REALTORS® ASSOCIATION OF EDMONTON. ALL RIGHTS RESERVED.Trademarks are owned or controlled by the Canadian Real Estate Association (CREA) and identify real estate professionals who are members of CREA (REALTOR®, REALTORS®) and/or the quality of services they provide (MLS®, Multiple Listing Service®)

Listing information last updated on August 24th, 2025 at 6:47am MDT