

\$162,000 - 303 Lancaster Terrace, Edmonton

MLS® #E4436873

\$162,000

2 Bedroom, 1.00 Bathroom, 1,037 sqft

Condo / Townhouse on 0.00 Acres

Dunluce, Edmonton, AB

You'll love being a home owner in the well planned townhouse complex of Lancaster Terrace. This unit is bright and airy with windows facing the south & west. The main level hosts the entry hallway with coat closet, a galley kitchen, dining room and a living room. The living room features a stone mantle fireplace and sliding patio doors out to the private patio/balcony. There's fresh carpet on the stairs leading up to the 2 bedrooms, office/den/storage room, upstairs laundry and the 4 piece bathroom. The unit is located in the NW corner of Lancaster Terrace with easy access to 157 avenue (street parking); your assigned, covered parking spot is also easily accessible from the unit, more or less right below it. Lancaster Terrace is conveniently located close to schools, the Dunluce Natural Area and the Castledowns YMCA, Arena and Park/Playground. Easily accessible on bus routes and a short distance away from groceries & amenities. Low condo fees and an affordable price tag make this a great buy!

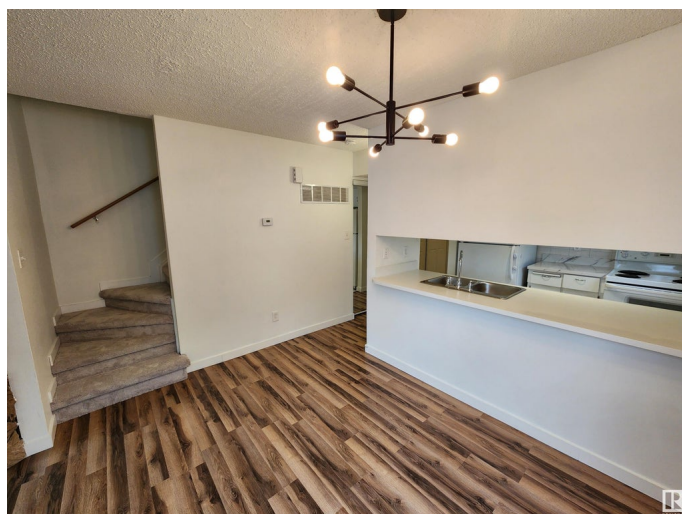
Built in 1977

Essential Information

MLS® # E4436873

Price \$162,000

Bedrooms 2



Bathrooms	1.00
Full Baths	1
Square Footage	1,037
Acres	0.00
Year Built	1977
Type	Condo / Townhouse
Sub-Type	Townhouse
Style	2 Storey
Status	Active

Community Information

Address	303 Lancaster Terrace
Area	Edmonton
Subdivision	Dunluce
City	Edmonton
County	ALBERTA
Province	AB
Postal Code	T5X 5T7

Amenities

Amenities	Parking-Plug-Ins, Parking-Visitor, Patio, Storage-In-Suite, Vinyl Windows
Parking Spaces	1
Parking	Stall

Interior

Appliances	Dryer, Hood Fan, Refrigerator, Stove-Electric, Washer
Heating	Forced Air-1, Natural Gas
Stories	2
Has Basement	Yes
Basement	None, No Basement

Exterior

Exterior	Wood, Stucco, Vinyl
Exterior Features	Backs Onto Park/Trees, Low Maintenance Landscape, Playground Nearby, Public Swimming Pool, Public Transportation, Schools, Shopping Nearby
Roof	Asphalt Shingles
Construction	Wood, Stucco, Vinyl
Foundation	Concrete Perimeter

School Information

Elementary	Dunluce School
Middle	Rosslyn School
High	Queen Elizabeth School

Additional Information

Date Listed	May 16th, 2025
Days on Market	33
Zoning	Zone 27
Condo Fee	\$367

DATA IS DEEMED RELIABLE BUT IS NOT GUARANTEED ACCURATE BY THE REALTORS® ASSOCIATION OF EDMONTON. COPYRIGHT 2025 BY THE REALTORS® ASSOCIATION OF EDMONTON. ALL RIGHTS RESERVED.Trademarks are owned or controlled by the Canadian Real Estate Association (CREA) and identify real estate professionals who are members of CREA (REALTOR®, REALTORS®) and/or the quality of services they provide (MLS®, Multiple Listing Service®)

Listing information last updated on June 18th, 2025 at 1:17pm MDT