

\$450,000 - 17 Eton Link, Spruce Grove

MLS® #E4435982

\$450,000

3 Bedroom, 2.50 Bathroom, 1,434 sqft
Single Family on 0.00 Acres

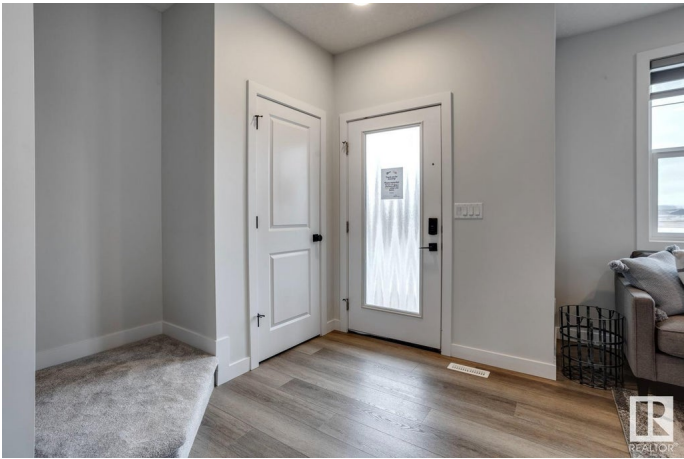
Easton, Spruce Grove, AB

Welcome to this beautifully designed 2-storey new build featuring modern style and smart functionality. The main floor offers a bright open-concept layout with a cozy electric fireplace in the living room, a spacious dining area, and a stylish kitchen complete with a pantry, island, and breakfast bar. A convenient mud room, 2pc bath, and separate side entrance add to the appeal. Upstairs, the primary bedroom features a walk-in closet and 4pc ensuite, while two additional bedrooms share another full 4pc bath. The upper-floor laundry adds everyday convenience to this fantastic home. A perfect blend of comfort and potential - ready for your next chapter. *Photos are representative*

Built in 2025

Essential Information

| | |
|----------------|-----------|
| MLS® # | E4435982 |
| Price | \$450,000 |
| Bedrooms | 3 |
| Bathrooms | 2.50 |
| Full Baths | 2 |
| Half Baths | 1 |
| Square Footage | 1,434 |
| Acres | 0.00 |
| Year Built | 2025 |



| | |
|----------|------------------------|
| Type | Single Family |
| Sub-Type | Detached Single Family |
| Style | 2 Storey |
| Status | Active |

Community Information

| | |
|-------------|--------------|
| Address | 17 Eton Link |
| Area | Spruce Grove |
| Subdivision | Easton |
| City | Spruce Grove |
| County | ALBERTA |
| Province | AB |
| Postal Code | T7X 4B7 |

Amenities

| | |
|-----------|--|
| Amenities | No Animal Home, No Smoking Home, Vinyl Windows |
| Parking | Parking Pad Cement/Paved |

Interior

| | |
|-------------------|---|
| Interior Features | ensuite bathroom |
| Appliances | Dishwasher-Built-In, Microwave Hood Fan, Refrigerator, Stove-Electric |
| Heating | Forced Air-1, Natural Gas |
| Fireplace | Yes |
| Fireplaces | Insert |
| Stories | 2 |
| Has Basement | Yes |
| Basement | Full, Unfinished |

Exterior

| | |
|-------------------|---|
| Exterior | Wood, Vinyl |
| Exterior Features | Park/Reserve, Playground Nearby, Schools, Shopping Nearby |
| Roof | Asphalt Shingles |
| Construction | Wood, Vinyl |
| Foundation | Concrete Perimeter |

Additional Information

| | |
|----------------|----------------|
| Date Listed | May 12th, 2025 |
| Days on Market | 1 |
| Zoning | Zone 91 |

DATA IS DEEMED RELIABLE BUT IS NOT GUARANTEED ACCURATE BY THE REALTORS® ASSOCIATION OF EDMONTON. COPYRIGHT 2025 BY THE REALTORS® ASSOCIATION OF EDMONTON. ALL RIGHTS RESERVED.Trademarks are owned or controlled by the Canadian Real Estate Association (CREA) and identify real estate professionals who are members of CREA (REALTOR®, REALTORS®) and/or the quality of services they provide (MLS®, Multiple Listing Service®)

Listing information last updated on May 13th, 2025 at 3:02pm MDT