

\$599,900 - 2040 210 St, Edmonton

MLS® #E4433986

\$599,900

5 Bedroom, 4.00 Bathroom, 1,906 sqft

Single Family on 0.00 Acres

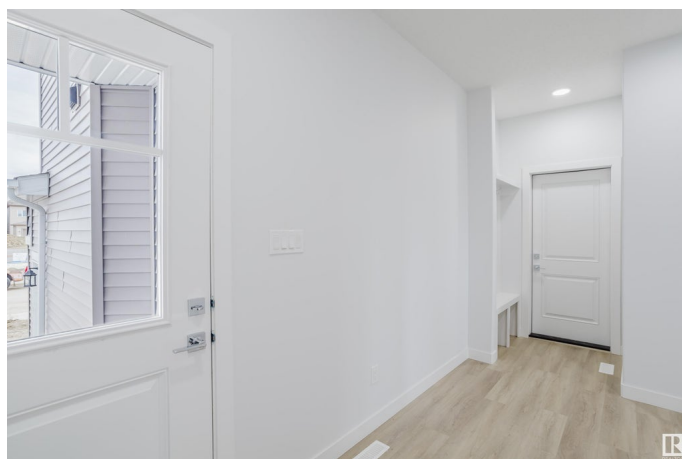
Stillwater, Edmonton, AB

BRAND NEW HOME IN VERGE, STILLWATER! LEGAL 2 BEDROOM BASEMENT SUITE with Private Side Entrance! This home features 9ft Ceilings & an Open concept floor plan. The stylized Living / Dining Area has an Ultra Modern Fireplace and In-Style Vinyl Plank Flooring. The modern two tone kitchen comes complete with ample storage and a large island with a white quartz countertop! Upstairs you'll find 3 LARGE bedrooms including a luxurious primary bedroom with a walk-in closet and ensuite, spacious laundry with a sink and a versatile bonus room. The 2 Bedroom Basement Suite features its own laundry and a full sized kitchen.

Built in 2025

Essential Information

MLS® #	E4433986
Price	\$599,900
Bedrooms	5
Bathrooms	4.00
Full Baths	4
Square Footage	1,906
Acres	0.00
Year Built	2025
Type	Single Family



Sub-Type	Detached Single Family
Style	2 Storey
Status	Active

Community Information

Address	2040 210 St
Area	Edmonton
Subdivision	Stillwater
City	Edmonton
County	ALBERTA
Province	AB
Postal Code	T6M 3H6

Amenities

Amenities	Ceiling 9 ft., Detectors Smoke, Exterior Walls- 2"x6", Hot Water Tankless, No Animal Home, No Smoking Home, Vinyl Windows, Natural Gas Stove Hookup
Parking	Double Garage Attached

Interior

Interior Features	ensuite bathroom
Appliances	Garage Control, Garage Opener, Hood Fan
Heating	Forced Air-2, Natural Gas
Fireplace	Yes
Fireplaces	Remote Control
Stories	3
Has Suite	Yes
Has Basement	Yes
Basement	Full, Finished

Exterior

Exterior	Wood, Stone, Vinyl
Exterior Features	Playground Nearby, Public Transportation, Schools, Shopping Nearby
Roof	Asphalt Shingles
Construction	Wood, Stone, Vinyl
Foundation	Concrete Perimeter

Additional Information

Date Listed	May 1st, 2025
-------------	---------------

Days on Market 2

Zoning Zone 57

DATA IS DEEMED RELIABLE BUT IS NOT GUARANTEED ACCURATE BY THE REALTORS® ASSOCIATION OF EDMONTON. COPYRIGHT 2025 BY THE REALTORS® ASSOCIATION OF EDMONTON. ALL RIGHTS RESERVED. Trademarks are owned or controlled by the Canadian Real Estate Association (CREA) and identify real estate professionals who are members of CREA (REALTOR®, REALTORS®) and/or the quality of services they provide (MLS®, Multiple Listing Service®)

Listing information last updated on May 3rd, 2025 at 8:32pm MDT