

\$375,000 - 522 11080 Ellerslie Road, Edmonton

MLS® #E4433844

\$375,000

2 Bedroom, 2.00 Bathroom, 1,165 sqft

Condo / Townhouse on 0.00 Acres

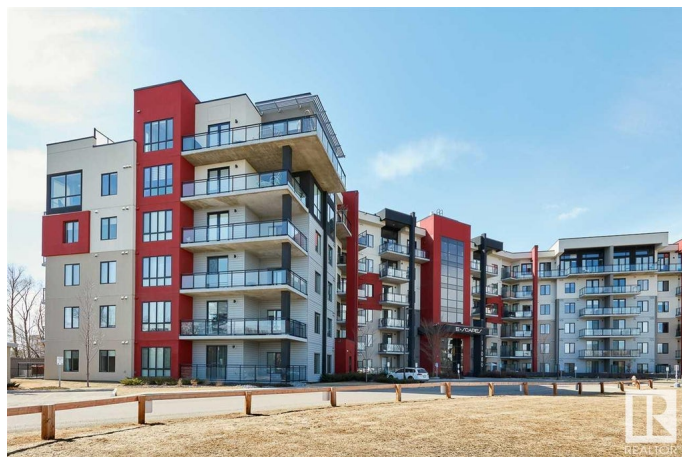
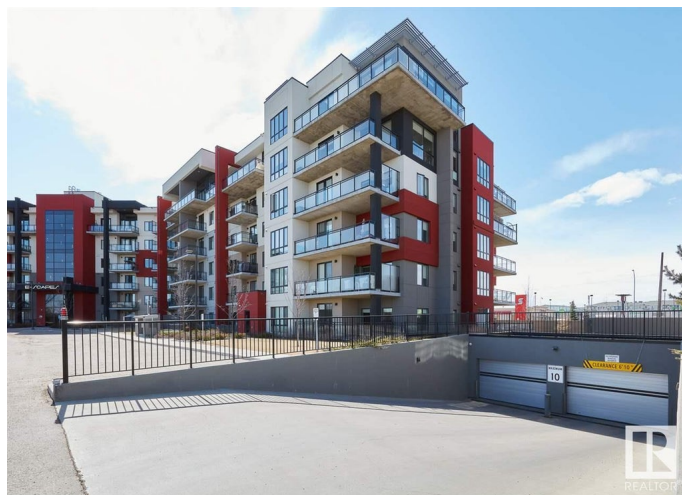
Richford, Edmonton, AB

FLOOR to CEILING WINDOWS in this CONCRETE and STEEL building! Modern and Elegant, this 2 BEDROOM/2 BATH end unit features a gourmet kitchen with eating bar, upgraded stainless steel appliances, quartz counters, soft close cabinets, a built-in pantry, and gorgeous dining room with fireplace. The luxurious master bedroom has a walk-through closet, beautiful lighting, and a large ensuite. Other great features are central A/C, in-suite laundry & storage and 2 UNDERGROUND PARKING stalls and extra storage. Enjoy the gorgeous view from the SE facing balcony with glass railing and gas barbeque outlet. Amenities include: a guest suite, fitness centre, 2 ROOFTOP TERRACES, and a LOUNGE with a bar, kitchen and billiards. Shopping, restaurants, public transportation and all your amenities are just across the street! 10 MINUTES TO THE AIRPORT.

Built in 2014

Essential Information

| | |
|----------------|-----------|
| MLS® # | E4433844 |
| Price | \$375,000 |
| Bedrooms | 2 |
| Bathrooms | 2.00 |
| Full Baths | 2 |
| Square Footage | 1,165 |



| | |
|------------|---------------------|
| Acres | 0.00 |
| Year Built | 2014 |
| Type | Condo / Townhouse |
| Sub-Type | Apartment High Rise |
| Style | Penthouse |
| Status | Active |

Community Information

| | |
|-------------|--------------------------|
| Address | 522 11080 Ellerslie Road |
| Area | Edmonton |
| Subdivision | Richford |
| City | Edmonton |
| County | ALBERTA |
| Province | AB |
| Postal Code | T6W 2C2 |

Amenities

| | |
|-----------|---------------------------------------------------------------------------------------------|
| Amenities | Air Conditioner, Exercise Room, Parking-Visitor, Party Room, Secured Parking, Security Door |
| Parking | Double Indoor, Heated, Underground |

Interior

| | |
|-------------------|---------------------------------------------------------------------------------------------------|
| Interior Features | ensuite bathroom |
| Appliances | Dishwasher-Built-In, Dryer, Microwave Hood Fan, Refrigerator, Stove-Gas, Washer, Window Coverings |
| Heating | Fan Coil, Natural Gas |
| Fireplace | Yes |
| Fireplaces | Wall Mount |
| # of Stories | 6 |
| Stories | 6 |
| Has Basement | Yes |
| Basement | None, No Basement |

Exterior

| | |
|-------------------|---------------------------------------------------------------------------|
| Exterior | Concrete, Stucco |
| Exterior Features | Airport Nearby, Playground Nearby, Public Transportation, Shopping Nearby |
| Roof | Flat |
| Construction | Concrete, Stucco |

Foundation Concrete Perimeter

Additional Information

Date Listed May 1st, 2025
Days on Market 48
Zoning Zone 55
Condo Fee \$810

DATA IS DEEMED RELIABLE BUT IS NOT GUARANTEED ACCURATE BY THE REALTORS® ASSOCIATION OF EDMONTON. COPYRIGHT 2025 BY THE REALTORS® ASSOCIATION OF EDMONTON. ALL RIGHTS RESERVED.Trademarks are owned or controlled by the Canadian Real Estate Association (CREA) and identify real estate professionals who are members of CREA (REALTOR®, REALTORS®) and/or the quality of services they provide (MLS®, Multiple Listing Service®)

Listing information last updated on June 18th, 2025 at 7:33am MDT