

\$619,900 - 3727 Kidd Crescent, Edmonton

MLS® #E4433626

\$619,900

3 Bedroom, 2.50 Bathroom, 2,020 sqft

Single Family on 0.00 Acres

Keswick Area, Edmonton, AB

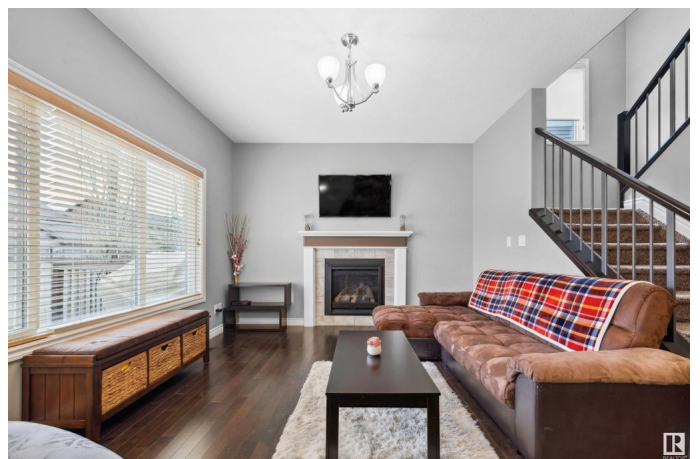
Style+charm welcomes you to this STUNNING family home,tucked away in the family community of Keswick.The gorgeous+spacious design will leave you breathless.The impressive kitchen boasts rich wood cabinets,granite,glass tile backsplash,s/s appliances(w/gas stove),island,walk thru pantry+dining area.The open room concept features a family room w/gas fireplace+engineered hardwood floors (stretching through).The main floor is complete w/a front den,2pc bath+mud room.The second level offers a spacious bonus room.The primary retreat is complete w/a 5pc ensuite+walk-in closet.There are two more bedrooms;a 4pc bath+laundry room(w/sink).The basement is unfinished+awaiting your own personal touch.Other features:iron railing,hardie board/stone siding,front porch,oversized garage(insulated/floor drain/gas),alley access...The list is endless!Enjoy the summer in the beautiful southwest backyard w/large deck+firepit.Steps to schools,shops,parks,the River Valley+a short distance to major freeways.Your DREAM HOME awaits!

Built in 2014

Essential Information

MLS® #

E4433626



Price	\$619,900
Bedrooms	3
Bathrooms	2.50
Full Baths	2
Half Baths	1
Square Footage	2,020
Acres	0.00
Year Built	2014
Type	Single Family
Sub-Type	Detached Single Family
Style	2 Storey
Status	Active

Community Information

Address	3727 Kidd Crescent
Area	Edmonton
Subdivision	Keswick Area
City	Edmonton
County	ALBERTA
Province	AB
Postal Code	T6W 2R1

Amenities

Amenities	Off Street Parking, On Street Parking, Ceiling 9 ft., Deck, Fire Pit, Front Porch, Storage-In-Suite, Vinyl Windows, Natural Gas BBQ Hookup
Parking Spaces	4
Parking	Double Garage Attached

Interior

Interior Features	ensuite bathroom
Appliances	Dishwasher-Built-In, Dryer, Garage Control, Hood Fan, Oven-Microwave, Refrigerator, Stove-Gas, Washer, Window Coverings
Heating	Forced Air-1, Natural Gas
Fireplace	Yes
Fireplaces	Mantel
Stories	2
Has Basement	Yes
Basement	Full, Unfinished

Exterior

Exterior	Wood, Stone, Hardie Board Siding
Exterior Features	Airport Nearby, Back Lane, Fenced, Flat Site, Golf Nearby, Landscaped, Park/Reserve, Paved Lane, Playground Nearby, Public Transportation, Schools, Shopping Nearby
Roof	Asphalt Shingles
Construction	Wood, Stone, Hardie Board Siding
Foundation	Concrete Perimeter

School Information

Elementary	Joey Moss School
Middle	Joey Moss School
High	Harry Ainley School

Additional Information

Date Listed	May 1st, 2025
Days on Market	1
Zoning	Zone 56
HOA Fees	350
HOA Fees Freq.	Annually

DATA IS DEEMED RELIABLE BUT IS NOT GUARANTEED ACCURATE BY THE REALTORS® ASSOCIATION OF EDMONTON. COPYRIGHT 2025 BY THE REALTORS® ASSOCIATION OF EDMONTON. ALL RIGHTS RESERVED. Trademarks are owned or controlled by the Canadian Real Estate Association (CREA) and identify real estate professionals who are members of CREA (REALTOR®, REALTORS®) and/or the quality of services they provide (MLS®, Multiple Listing Service®)

Listing information last updated on May 2nd, 2025 at 7:17am MDT