

# \$1,495,000 - 11833 102 Avenue, Edmonton

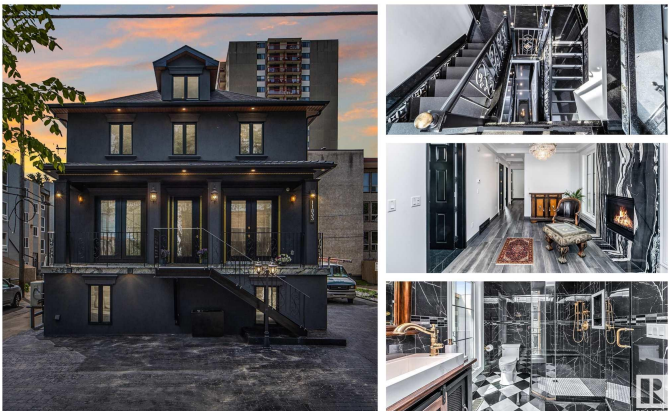
MLS® #E4428188

**\$1,495,000**

0 Bedroom, 0.00 Bathroom,  
Office on 0.00 Acres

W&#248;hkw&#227;nt&#227;win, Edmonton, AB

3 EXECUTIVE COMMERCIAL OFFICES  
INSIDE ONE LUXURY OFFICE BUILDING IN  
THE HEART OF DOWNTOWN: A standout  
opportunity just off Jasper Ave! This fully  
rebuilt heritage property blends timeless  
elegance with modern upgrades&#201;ideal for  
office or retail use. Offering over 3 floors of  
versatile space, each level features a  
welcoming reception area with fireplace,  
private offices, designer washrooms, and two  
floors with kitchenettes. Highlights include  
marble floors, custom iron railings,  
contemporary lighting, and a stunning central  
staircase. Fully upgraded from top to bottom:  
new foundation, wiring, plumbing, HVAC,  
windows, roof, and more. Designed for a  
single business or multi-tenant use, with  
secure access to each level. Paved parking at  
the side and rear. Located just two blocks from  
High Street and Jasper Ave in Edmonton&#228;™s  
vibrant core. A rare, high-impact investment  
you&#228;™ll be proud to own!



Built in 1912

## Essential Information

MLS® #	E4428188
Price	\$1,495,000
Bathrooms	0.00
Acres	0.00

Year Built	1912
Type	Office
Status	Active

### Community Information

Address	11833 102 Avenue
Area	Edmonton
Subdivision	W&hkw&ant&win
City	Edmonton
County	ALBERTA
Province	AB
Postal Code	T5K 0R6

### Exterior

Exterior	Concrete, Wood Frame
Roof	Asphalt Shingles
Construction	Concrete, Wood Frame

### Additional Information

Date Listed	March 28th, 2025
Days on Market	35
Zoning	Zone 12

DATA IS DEEMED RELIABLE BUT IS NOT GUARANTEED ACCURATE BY THE REALTORS® ASSOCIATION OF EDMONTON. COPYRIGHT 2025 BY THE REALTORS® ASSOCIATION OF EDMONTON. ALL RIGHTS RESERVED.Trademarks are owned or controlled by the Canadian Real Estate Association (CREA) and identify real estate professionals who are members of CREA (REALTOR®, REALTORS®) and/or the quality of services they provide (MLS®, Multiple Listing Service®)

Listing information last updated on May 2nd, 2025 at 9:18am MDT