

\$589,000 - 3317 107a Street, Edmonton

MLS® #E4417339

\$589,000

3 Bedroom, 3.00 Bathroom, 1,316 sqft

Single Family on 0.00 Acres

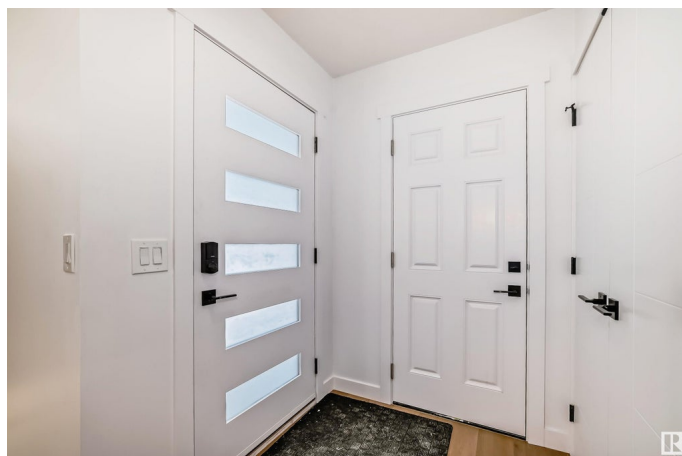
Steinhauer, Edmonton, AB

Impressive bungalow located in the heart of Steinhauer! This beautifully maintained home offers the perfect balance of modern elegance and natural tranquility. With a double attached garage, this home is sure to impress. From the moment you step inside, you'll be captivated by the bright and spacious living room. The kitchen offers high-end appliances and plenty of storage space. To round out the main floor, a primary bedroom with three piece ensuite plus two additional bedrooms and bathroom. The basement boasts a large family room, two Dens with closets and windows in both, and a 3pc bathroom. But the real highlight? The unbeatable location. This home offers immediate access 111 Street or Calgary trial-welcome home!

Built in 1975

Essential Information

| | |
|----------------|-----------|
| MLS® # | E4417339 |
| Price | \$589,000 |
| Bedrooms | 3 |
| Bathrooms | 3.00 |
| Full Baths | 3 |
| Square Footage | 1,316 |
| Acres | 0.00 |
| Year Built | 1975 |



| | |
|----------|------------------------|
| Type | Single Family |
| Sub-Type | Detached Single Family |
| Style | Bungalow |
| Status | Active |

Community Information

| | |
|-------------|------------------|
| Address | 3317 107a Street |
| Area | Edmonton |
| Subdivision | Steinhauer |
| City | Edmonton |
| County | ALBERTA |
| Province | AB |
| Postal Code | T6J 3A8 |

Amenities

| | |
|-----------|------------------------|
| Amenities | See Remarks |
| Parking | Double Garage Attached |

Interior

| | |
|-------------------|--|
| Interior Features | ensuite bathroom |
| Appliances | Dishwasher-Built-In, Dryer, Microwave Hood Fan, Refrigerator, Stove-Electric, Washer |
| Heating | Forced Air-1, Natural Gas |
| Stories | 2 |
| Has Basement | Yes |
| Basement | Full, Finished |

Exterior

| | |
|-------------------|--|
| Exterior | Wood, See Remarks |
| Exterior Features | Back Lane, Corner Lot, Landscaped, Public Transportation, Shopping Nearby, See Remarks |
| Roof | Asphalt Shingles |
| Construction | Wood, See Remarks |
| Foundation | Concrete Perimeter |

Additional Information

| | |
|----------------|-------------------|
| Date Listed | January 8th, 2025 |
| Days on Market | 177 |
| Zoning | Zone 16 |

DATA IS DEEMED RELIABLE BUT IS NOT GUARANTEED ACCURATE BY THE REALTORS® ASSOCIATION OF EDMONTON. COPYRIGHT 2025 BY THE REALTORS® ASSOCIATION OF EDMONTON. ALL RIGHTS RESERVED.Trademarks are owned or controlled by the Canadian Real Estate Association (CREA) and identify real estate professionals who are members of CREA (REALTOR®, REALTORS®) and/or the quality of services they provide (MLS®, Multiple Listing Service®)

Listing information last updated on July 3rd, 2025 at 10:02pm MDT