

Courtesy Of Hugh Fraser Of Fraser-Tradex Realty Inc

# \$2,716,260 - 6515 17 Street, Edmonton

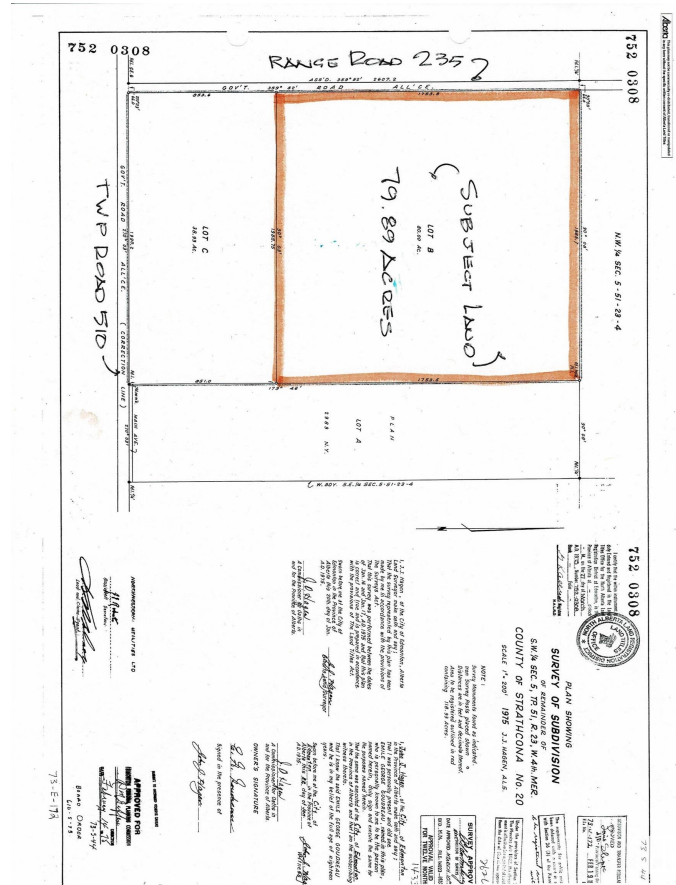
MLS® #E4394871

**\$2,716,260**

0 Bedroom, 0.00 Bathroom,  
Single Family on 0.00 Acres

Edmonton South East, Edmonton, AB

Future development opportunity. 79.89 acre rectangular parcel of land located just east of Beaumont on TWP RD 510 and quarter mile north on Range Road 235. Recently annexed into the City of Edmonton, currently zoned AES (Agriculture Edmonton South). Just a couple miles to the town of Beaumont, Colonial and Eagle Rock Golf Courses, short drive to Sherwood Park, South Edmonton Common and the International Airport.



## Essential Information

MLS® #	E4394871
Price	\$2,716,260
Bathrooms	0.00
Acres	0.00
Type	Single Family
Sub-Type	Vacant Lot/Land
Status	Active

## Community Information

Address	6515 17 Street
Area	Edmonton
Subdivision	Edmonton South East
City	Edmonton
County	ALBERTA
Province	AB
Postal Code	T6X 1A8

## Exterior

Exterior Features Airport Nearby, Private Setting, Shopping Nearby

## Additional Information

Date Listed June 27th, 2024

Days on Market 309

Zoning Zone 33

DATA IS DEEMED RELIABLE BUT IS NOT GUARANTEED ACCURATE BY THE REALTORS® ASSOCIATION OF EDMONTON. COPYRIGHT 2025 BY THE REALTORS® ASSOCIATION OF EDMONTON. ALL RIGHTS RESERVED. Trademarks are owned or controlled by the Canadian Real Estate Association (CREA) and identify real estate professionals who are members of CREA (REALTOR®, REALTORS®) and/or the quality of services they provide (MLS®, Multiple Listing Service®)

Listing information last updated on May 2nd, 2025 at 6:02am MDT