

\$0 - 8137 104 St Nw Nw, Edmonton

MLS® #E4337311

\$0

Bedroom, Bathroom, 1,327 sqft

Retail on 0.00 Acres

Strathcona Junction, Edmonton, AB

Prime retail space (1,327 SF) on Marquee intersection of Whyte Avenue & 104 Street. High profile signage rights available. Exposure to 41,300 vehicles per day (2020 City of Edm). Mixed-use historic building with main floor access to Whyte Avenue. Walking access to countless amenities including coffee shops, restaurants, boutique retail, fitness and entertainment. Basement space with separate entrance also available. Immediate availability.

Built in 1930

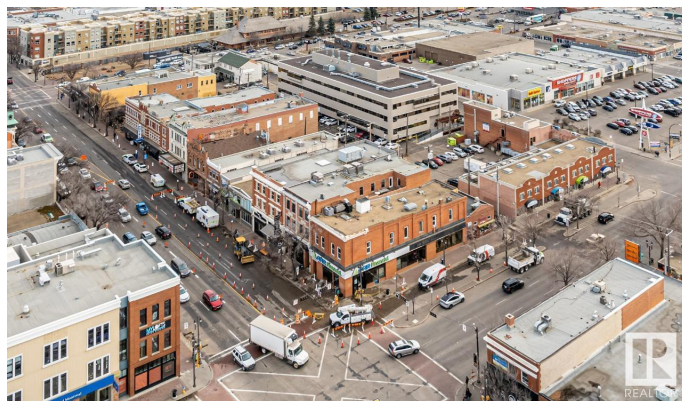
Essential Information

| | |
|----------------|----------|
| MLS® # | E4337311 |
| Square Footage | 1,327 |
| Acres | 0.00 |
| Year Built | 1930 |
| Type | Retail |

Community Information

| | |
|-------------|---------------------|
| Address | 8137 104 St Nw Nw |
| Area | Edmonton |
| Subdivision | Strathcona Junction |
| City | Edmonton |
| Province | AB |
| Postal Code | T6E 4E4 |

Exterior



Construction Brick/Masonry

Additional Information

Date Listed April 25th, 2023

Zoning DC1 (20476)

DATA IS DEEMED RELIABLE BUT IS NOT GUARANTEED ACCURATE BY THE REALTORS® ASSOCIATION OF EDMONTON. COPYRIGHT 2024 BY THE REALTORS® ASSOCIATION OF EDMONTON. ALL RIGHTS RESERVED.Trademarks are owned or controlled by the Canadian Real Estate Association (CREA) and identify real estate professionals who are members of CREA (REALTOR®, REALTORS®) and/or the quality of services they provide (MLS®, Multiple Listing Service®)
Listing information last updated on May 17th, 2024 at 1:31am MDT